

**PORT
AUTHORITY
NY NJ**

JFK Redevelopment Program

Community Advisory Council Meeting

09.16.24



AIR LAND RAIL SEA

Welcome

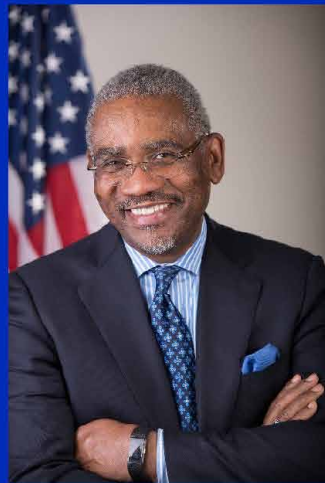


Dr. Stacie NC Grant
JFKR Community Advisory Council, Facilitator

Agenda

- **Opening Remarks** – Dr. Stacey NC Grant, JFKR Facilitator
- **Welcome** – Congressman Gregory W. Meeks & Queens Borough President Richards
- **Greetings** – Rachelle Antoine & Akshar Patel, Co-Manager of External Affairs & Community Outreach
- **Port Authority of NY & NJ Updates**
- **Diversity in Contracting and Local Workforce**
- **Public Q & A**
- **Terminal Developer & Project Updates**
- **Community Initiative Updates**
- **Public Q & A**
- **Community Engagement & Outreach Recap & Updates**

Opening Remarks



Congressman Gregory W. Meeks
Co-Chair,
JFK Redevelopment Community Advisory Council



Queens Borough President Donovan Richards
Co-Chair,
JFK Redevelopment Community Advisory Council

Dr. Grant welcomed everyone and underscored the importance of the legacy work we are doing through the JFK Redevelopment Project. As we focus on the investments being made in the communities surrounding the airport, we thank the Governor's Office, The Port Authority of New York & New Jersey, the Terminal Developers and the JFKR Community Advisor Council Members for the continued collaboration and commitment to excellent execution.

Congressman Meeks welcomed everyone and acknowledged Dr. Stacie NC Grant and his colleagues in Government who were present NYS Senator Leroy Comrie, Assemblymembers Clyde Vanel and Khaleel Anderson and Councilwoman Dr. Nantasha Williams. He reminded the audience that this work is over 25 years in the making and just like LGA's transformation, a new JFK will live up to being a world class airport. Acknowledging that nothing good comes easy, Congressman Meeks is committed to ensuring that the hands that build this airport and those who those who have concessions in it come from Southeast Queens and neighboring communities, representing true diversity.

Applauding local compliance monitoring from Crecent Consulting and RF Wilkins Consultants to ensure numbers are verified, coupled with the efforts from JFK Redevelopment Community Managers Rachelle Antoine and Akshar Patel, there will be equity for everyone to get an opportunity. It is near impossible for everyone to get a contract, but everyone will have a fair shot. This committee will continue to hold prime contractors accountable. Skanska was challenged to step up their efforts on opportunities available on the roadways and parking garages and Tishman was cautioned to step up their local numbers as well.

Congressman Meeks thanked his Co-Chair Borough President Donovan Richards and acknowledged he was at a Town Hall in the Rockaways so he couldn't attend tonight. He reminded everyone that his door remains open to share any information or concerns. He then closed his comments with acknowledging two of his own legacies who were in the room, his granddaughter London and daughter Ebony which makes all this hard work worthwhile.

Shurn Anderson, Director of Economic Development for the Office of the Borough President gave the following remarks on behalf of Borough President Donovan Richards

Welcome back everyone from the summer and thank you all for your tireless work. We look forward to hearing the reporting on redevelopment since the last quarter. Developers are being held to the same standard as everyone else to stay on pace with hiring locally and staying on track with MWBE certified firms. New concession opportunities are coming up and we will be monitoring to ensure every effort is being extended to our local businesses. Queens is the future of NYC, and the talent of our residents is unmatched. We couldn't be more excited to build out all the aspects of the world class state of the art JFK Airport that we envision together. Since our last meeting, my office held multiple job fairs at Queens Borough Hall. We are pleased to see outreach is continuing and that each terminal developer is continuing to host outreach opportunities. I am honored to co-chair the JFK Redevelopment Community Advisory Council with Congressman Meeks and honor the community's request for local hiring and job training. That means ensuring our local businesses in Southeast Queens and Nassau County are the ones getting these lucrative contracts. JFK is the gateway to New York City, New York State and the United States. Thank you again to the Port Authority for investing in Queens with over 19 Billion dollars in our 2 airports; a pair of world class facilities and 2 of the biggest economic drivers in the state. Thank you to the JFK Advisory Council Members for helping to identify the vision and to move this project to where we are today.

Greetings



Ms. Rachelle Antoine
Co-Manager of External Affairs and Community Outreach
JFK Redevelopment Program



Mr. Akshar Patel
Co-Manager of External Affairs and Community Outreach
JFK Redevelopment Program



Rachelle Antoine shared remarks read by Dr. Grant

Dear JFK Advisory Council Members, Terminal Partners and Community Members

I regret that I am unable to be with you in person today, but I am here in spirit. A special thank you to Dr. Grant for graciously lending me her voice; as always, her fierce dedication as a facilitator is truly appreciated. I want to express my gratitude to each of you for your continued commitment to the JFK Redevelopment Program and our shared vision of a thriving, inclusive community. My journey on this project continues to be marked by dedication, outreach, and collaboration with the community, the Port Authority, and our terminal developer partners. Above all, it is driven by a deep commitment and love to serving Southeast Queens.

Please know that while I am not physically present tonight, I remain fully engaged in all of our initiatives. It's truly inspiring to see our collective efforts start to blossom and bear fruit, and I know you'll hear more about these exciting developments in the upcoming slides. Congratulations to all the success stories that you will hear tonight, many of whom I've had an opportunity to meet and connect with.

I want to extend a huge shout-out to our co-chairs, Congressman Gregory Meeks and Borough President Donovan Richards, for their leadership and guidance. Special thanks to my partner Akshar and our incredible outreach team, and to Hersh for his continued leadership. I'm also thinking of Bridgette tonight. I know she would have loved to be here, and I'm sending her all our love, prayers and best wishes for a speedy recovery.

I am confident that today's meeting will be another step forward in our journey together. Let's continue working together to build a brighter future for JFK and our surrounding communities. I look forward to catching up with each of you soon. Stay tuned and stay connected! Thank you for your understanding, and I wish you all a successful meeting.

Warm regards,
Rachelle Antoine

Akshar Patel

Akshar also welcomed everyone and thanked the Robert Ross Life Center for hosting the meeting. He echoed Rachelle's remarks and reminded everyone that there is still a lot of work to be done but the outreach team is working hard to get the work out in the community. He thanked the Community Advisory Council for their efforts. He closed with the aspirational goal to not only meet but surpass the 30% mandate with 40%.

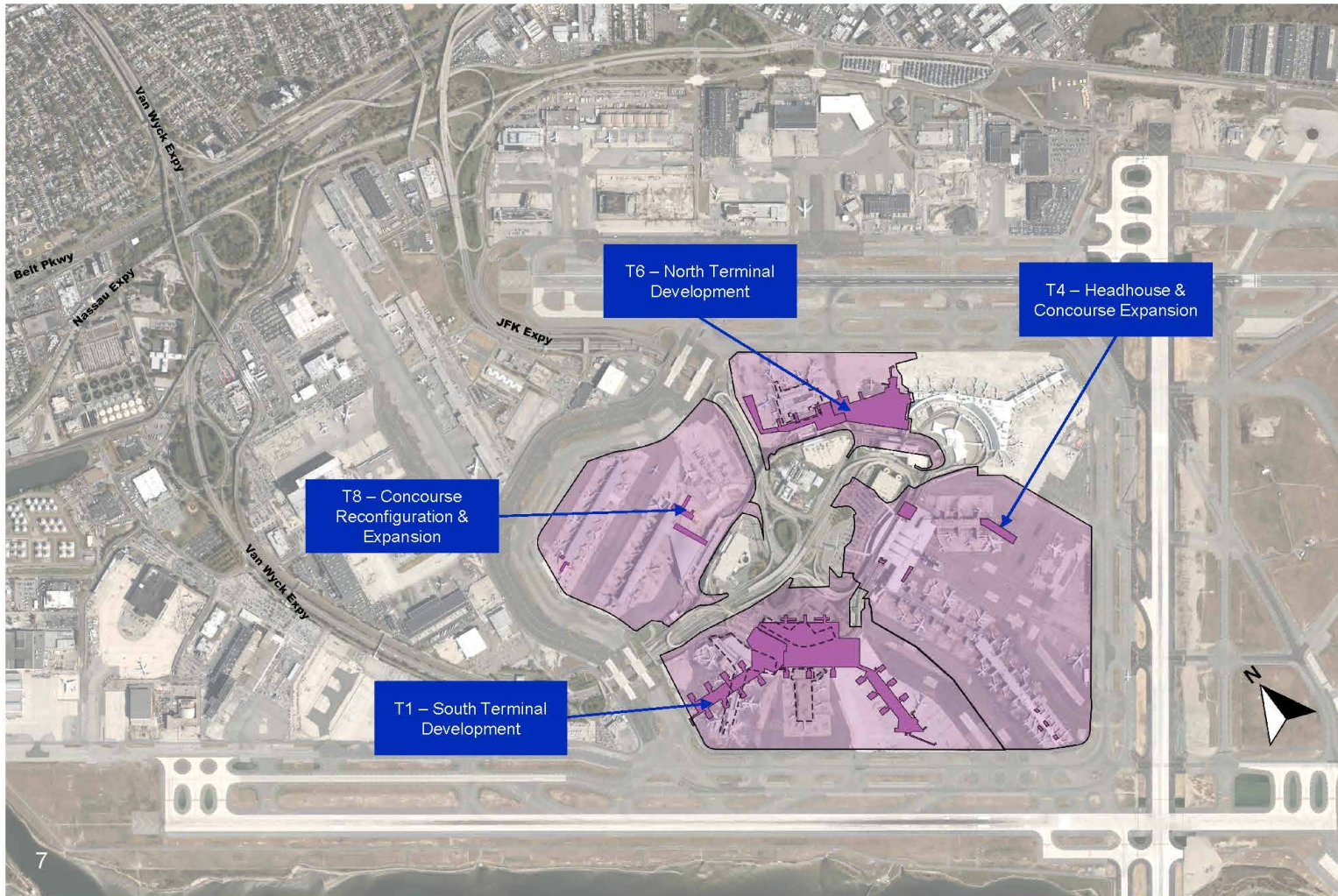
**PORT
AUTHORITY
NY NJ**

Port Authority of NY & NJ Updates



AIR LAND RAIL SEA

PRIVATE TERMINAL DEVELOPMENTS OVERVIEW - \$15.5B+



Terminal 1: \$9.5B

- 2.4M SF Construction underway

Terminal 6: \$4.2B

- 1.2M SF Construction underway

Terminal 4: \$1.5B

- Substantially completed

Terminal 8: \$0.4B

- Completed 2022

PANYNJ SUPPORTING INFRASTRUCTURE OVERVIEW - \$3.9B



Central Terminal Area
(CTA) Roadways & Utilities

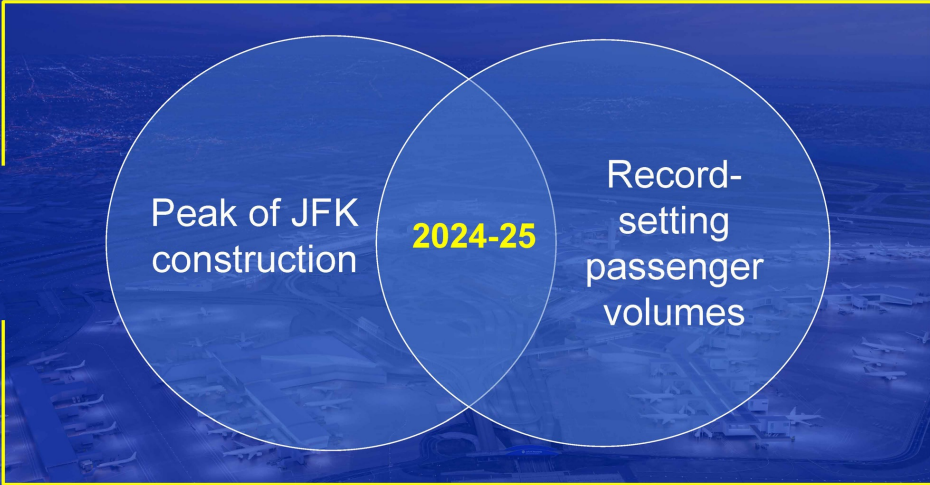
Parking Garage/Ground
Transportation Center

Off-CTA Roadways

Central Substation 2

Airside Improvements

Construction Support
Facility



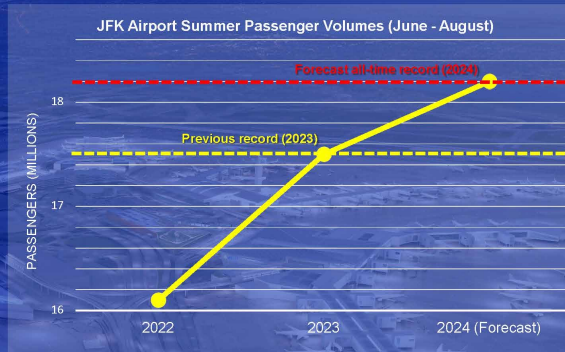
JFK Construction Approaching Peak of Construction

- Record construction activity this summer, over \$200M per month
- 2024-2025 represents peak of the \$19B transformation; largest in JFK's 76-year history
- First gates at Terminal 1 and Terminal 6 scheduled to open in 2026
- Peak construction activity will at times impose significant restrictions on the capacity of the roadways on the airport

10

JFK Record Passenger Volumes

- Compounding the peak construction activity are record travel volumes
- TSA prepared for busiest summer travel season ever, and the Port Authority forecasted 18.2 million travelers will travel through JFK Airport -- a record 700,000 more than 2023



11

Proactive Traffic Management Strategy



- Airport Operations Center staffed 24/7 supporting airport-wide coordination and active management traffic
- Leveraging predictive analytics through historical trend analysis, flight activity, and passenger forecasting
- Communicate anticipated peak activity time frames to ensure resource allocation
- Implement traffic mitigations in response to increased wait or queues

12

The JFK *FREE & EASY* Lot



New JFK Free and Easy Lot

- New “easy” lot at Lefferts Blvd AirTrain Station for pick-ups/drop-offs
- Save time and stay clear of congestion at the terminals
- ***Free*** 8-minute AirTrain ride to/from Terminals, operates 24/7
- “Meet me or leave me at the free and easy”

Take Public Transit



- JFK AirTrain at Jamaica is 20 minutes from Penn, Grand Central or Atlantic Terminal via LIRR or use **E J Z**
- Subway to AirTrain at Howard Beach via **A**
- Additional peak hour capacity added to AirTrain routes

Student Art Poster Contest (Proposed Community Initiative)



Goals

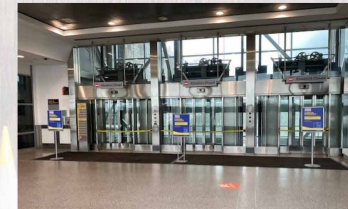
- Beautify passenger-facing areas at JFK Airport to enhance customer experience.
- Provide opportunity for students & local community to interface with, and benefit from, the airport
- Solicit artwork with the poster theme of “Aviation With A Queens Sense of Place”

Overview

- Students in Tier 1 schools, Grades 6-12
- Hand drawn or digital poster designs will be accepted
- Up to 6 winners to be selected
- Winning poster designs to be publicly displayed at multiple locations across the airport

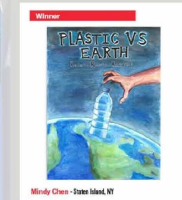
Possible Display Locations

- Interior & Exterior of Existing Terminals
- Inside JFK AirTrain Cars



Next Steps:

Further discussion at the next JFKRCAC Education Committee Meeting (date TBD)



Example Artwork - Past Winner of the PA Bus Terminal Student Poster Art Contest

MBE Success Story – PA Consultant



M/WBE & LBE Participation – Public Reporting

Crescent Consulting & R.F. Wilkins Consultants

- **JED Engineering and Land Surveying, PC**, has firmly established itself as a premier provider of professional services in Civil Engineering, Construction Management, Resident Engineering Inspection, and Land Surveying. Headquartered in Western Nassau County, they serve a diverse range of clients across the New York metropolitan area and beyond. Our reputation for excellence has attracted a broad spectrum of clients across the public sector.
- Scope: JED is a subconsultant to Urban Engineers, and STV-LiRo-Tectonic JV providing **Construction Management and Inspection services** to the Port Authority at JFK Airport. JED's team of Resident Engineer, MEP Inspector, and Office Engineer **successfully managed the renovation of Building 111 for the new JFK Redevelopment, NTO and JMP offices**. The \$25M renovation of Building 111 was a success story in accomplishing the participation of 100% LBE/MBE prime contractors. JED's team of professionals are **also providing Inspection services at the Terminals, RUGTC and TAA projects**.

- Contract Amount: \$4M combined
- Tier 1: Valley Stream, NY 11581
- Certification: MBE (African-American)



MWBE & LBE Participation: Verified through 07/2024

Skanska Halmar JFK Joint Venture / Roadways, Utilities, & Ground Transportation Center					
Type of Firm	Awards (thru 07/31/2024) \$1.1B		Payments (thru 07/31/2024) \$189M		No. of Firms
MBE (All Ethnicities)	\$165M	15%	\$15M	8%	38
MBE: Asian Pacific/Indian	\$104M	9%	\$10M	5%	17
MBE: Black/African American	\$31M	3%	\$2M	1%	8
MBE: Hispanic/Latino	\$30M	3%	\$3M	2%	13
WBE (Caucasian Women)	\$57M	5%	\$10M	5%	5
LBE Tier 1	\$21M	2%	\$3M	2%	7
LBE Tier 2	\$32M	3%	\$2M	1%	38

The New Terminal One / T1					
Type of Firm	Awards (thru 07/31/2024) \$3.1B		Payments (thru 07/31/2024) \$1.9B		No. of Firms
MBE (All Ethnicities)	\$692M	22%	\$312M	16%	202
MBE: Asian Pacific/Indian	\$138M	4%	\$78M	4%	66
MBE: Black/African American	\$240M	8%	\$86M	5%	77
MBE: Hispanic/Latino	\$313M	10%	\$147M	8%	57
MBE: Native American	\$1M	0.02%	\$450K	0.02%	2
WBE (Caucasian Women)	\$328M	10%	\$133M	7%	107
LBE Tier 1	\$169M	5%	\$51M	3%	46
LBE Tier 2	\$360M	11%	\$59M	3%	36

MWBE & LBE Participation: Verified through 07/2024

American Airlines / T8					
Type of Firm	Awards (thru 07/31/2024) \$372M		Payments (thru 07/31/2024) \$372M		No. of Firms
MBE (All Ethnicities)	\$95M	26%	\$94M	25%	71
MBE: Asian Pacific/Indian	\$41M	11%	\$40M	11%	24
MBE: Black/African American	\$12M	3%	\$13M	4%	23
MBE: Hispanic/Latino	\$42M	11%	\$40M	11%	23
MBE: Native American	\$143K	0.04%	\$143K	0.04%	1
WBE (Caucasian Women)	\$72M	20%	\$69M	18%	41
LBE Tier 1	\$19M	5%	\$19M	5%	20
LBE Tier 2	\$17M	5%	\$17M	5%	17

MWBE & LBE Participation: Verified through 07/2024

Delta Air Lines / JFKIAT / T4					
Type of Firm	Awards (thru 07/31/2024) \$1.1B		Payments (thru 07/31/2024) \$1.1B		No. of Firms
MBE (All Ethnicities)	\$265M	23%	\$260M	23%	134
MBE: Asian Pacific/Indian	\$88M	8%	\$81M	7%	41
MBE: Black/African American	\$66M	6%	\$57M	5%	47
MBE: Hispanic/Latino	\$112M	10%	\$123M	11%	45
MBE: Native American	\$45K	0.004%	\$27K	0.002%	1
WBE (Caucasian Women)	\$173M	15%	\$123M	11%	91
LBE Tier 1	\$43M	4%	\$34M	3%	35
LBE Tier 2	\$92M	8%	\$94M	9%	52

JFK Millennium Partners / T6					
Type of Firm	Awards (thru 07/31/2024) \$2B		Payments (thru 07/31/2024) \$1B		No. of Firms
MBE (All Ethnicities)	\$301M	15%	\$86M	8%	119
MBE: Asian Pacific/Indian	\$103M	5%	\$37M	4%	36
MBE: Black/African American	\$64M	3%	\$14M	1%	41
MBE: Hispanic/Latino	\$132M	6%	\$35M	3%	39
MBE: Native American	\$2M	0.1%	\$32K	0.003%	3
WBE (Caucasian Women)	\$208M	10%	\$44M	4%	80
LBE Tier 1	\$27M	1%	\$8M	1%	21
LBE Tier 2	\$141M	7%	\$32M	3%	25

Terminal 1 Local Workforce Placements – thru 07/2024

Tier 1

Trade	Zip Code
200 Laborers	11411, 11412, 11413, 11414,
54 Operators	11415, 11416, 11417, 11418,
50 Teamsters	11419, 11420, 11421, 11422,
33 Carpenters	11423, 11426, 11427, 11429,
58 Ironworkers	11432, 11433, 11434, 11435,
36 Electricians	11436, 11516, 11518, 11526,
7 Plumbers	11559, 11580, 11581, 11691,
3 Painters	11692, 11693, 11694, 11674
13 Mason	
11 Steamfitters	
6 Roofer	
6 Sheet Metal	

Tier 2

Trade	Zip Code
131 Laborers	11001, 11003, 11103, 11104, 11105,
42 Operators	11106, 11096, 11021, 11040, 11354,
27 Teamsters	11355, 11356, 11357, 11360, 11361,
38 Carpenters	11364, 11365, 11366,
45 Ironworkers	11367, 11368, 11369, 11370, 11372,
59 Electricians	11373, 11374, 11375, 11377, 11378,
8 Asbestos	11379, 11385
9 Plumbers	
4 Painters	
8 Mason	
12 Steamfitters	
10 Sheet metal	
4 Insulators	
2 Roofer	

Project Totals

Local Skilled – Tier 1	8.71%
Local Laborers – Tier 1	8.74%

Project Totals

Local Skilled – Tier 2	7.21%
Local Laborers – Tier 2	11.76%

We continue to work with the unions on a regular basis to help facilitate local workforce participation.
Other placements were also made outside of Tier 1 and Tier 2

JFK Local Construction Workforce
Participation – Public Reporting
Crescent Consulting

Terminal 4 Local Workforce Placements – thru 07/2024

Tier 1

Tier 2

A total of approximately 605 placements have been made of which 30 are female

Trade	Zip Code
170 Laborers	11412, 11413, 11414,
78 Carpenters	11417, 11419, 11420,
17 Sheet metal	11422, 11423, 11429, 11434,
11 Steamfitters	11435, 11691
27 Operators	

Trade	Zip Code
160 Laborers	11357, 11358, 11368, 11372,
90 Carpenters	11373, 11377, 11385, 11566
24 Sheet metal	
18 Steamfitters	
10 Operators	

Project Totals	
Local Skilled – Tier 1	8.3%
Local Laborers – Tier 1	18.1%

Project Totals	
Local Skilled – Tier 2	11.3%
Local Laborers – Tier 2	8.9%

We continue to work with the unions on a regular basis to help facilitate local workforce participation.
Other placements were also made outside of Tier 1 and Tier 2

Terminal 6 Local Workforce Placements – thru 07/2024

Tier 1

A total of approximately 216 placements were made of which 16 are female

Trade	Zip Code
36 Laborers	11159, 11414, 11416, 11417,
5 Carpenters	11418, 11419, 11420, 11423, 11429,
34 Escorts	11432, 11435, 11436, 11580, 11581,
13 Ironworkers	11691, 11692, 11693
6 Plumbers	
2 Operators	
2 Teamster	
3 Dock builder	
1 Brick Layer	
3 Lather	
2 Steamfitters	
2 Welders	

Project Totals	
Local Skilled – Tier 1	7.2%
Local Laborers – Tier 1	11.8%

Tier 2

Trade	Zip Code
30 Laborers	11003, 11357, 11361, 11366, 11373,
6 Carpenters	11374, 11378, 11385, 11572, 11590,
24 Ironworkers	11105, 11368, 11369, 11370, 11372,
16 Plumbers	11377, 11473, 11510, 11520, 11535,
2 Escorts	11561, 11354, 11356, 11554, 11762,
4 Operators	11001, 11701, 11731, 11790, 11746,
4 Steamfitter	11787, 11772, 11758, 11756, 11751
1 Teamster	
2 Sheet Metal	
7 Brick Layers	
1 Masons	
3 Roofers	
1 Dock builder	
4 Lathers	
2 Specialties	

Project Totals	
Local Skilled – Tier 2	7.7%
Local Laborers – Tier 2	11.6%

Additional placements made from Tier 2 are pending confirmation and will be provided at the next JFKR Advisory Council Meeting.

We continue to work with the unions on a regular basis to help facilitate local workforce participation.

Other placements were also made outside of Tier 1 and Tier 2

Aeroterm Local Workforce Placements – thru 07/2024

Tier 1

A total approximately of 211 placements were made of which 27 are female

Trade	Zip Code
27 Laborers	11413, 11414, 11416, 11417,
17 Operators	11418, 11419, 11421, 11422,
17 Electricians	11423, 11432, 11433, 11434,
9 Carpenters	11435, 11436, 11580, 11691,
6 Ironworkers	11692, 11643, 11694, 11693
2 Teamster	

Tier 2

Trade	Zip Code
70 Laborers	11379, 11385, 11377, 11372,
16 Operators	11369, 11368, 11357,
35 Electricians	11104, 11367, 11357, 11103,
4 Ironworkers	11379, 11384, 11378, 11364,
2 Teamsters	11361, 11356, 11373
1 Sheet metal	
4 Carpenters	
1 Mason	

Project Totals	
Local Skilled – Tier 1	8.68%
Local Laborers – Tier 1	13.88%

Project Totals	
Local Skilled – Tier 2	9.63%
Local Laborers – Tier 2	15.07%

We continue to work with the unions on a regular basis to help facilitate local workforce participation.
Other placements were also made outside of Tier 1 and Tier 2

Total Local Workforce Placements thru 07/2024

Tier 1

A total of approximately 967 placements were made

Trade	Zip Code
433 Laborers	11003, 11096, 11411, 11412, 11413,
125 Carpenters	11414, 11415, 11416, 11417, 11418,
23 Sheet metal	11419, 11420, 11421, 11422, 11423,
100 Operators	11426, 11427, 11429, 11432, 11433,
54 Teamsters	11434, 11435, 11436, 11516, 11518,
77 Ironworkers	11526, 11559, 11580, 11581, 11691,
34 Escorts	11692, 11693, 11694, 11674
13 Plumbers	
24 Steamfitters	
53 Electricians	
3 Dock Builders	
3 Painters	
13 Mason	
3 Lathers	
1 Brick Layer	
6 Roofer	
2 Welders	

Tier 2

A total of approximately 940 placements were made

Trade	Zip Code
391 Laborers	11001, 11003, 11103, 11104, 11105,
138 Carpenters	11106, 11021, 11040, 11354, 11355,
37 Sheet metal	11356, 11357, 11360, 11361, 11364,
72 Operators	11365, 11366, 11367, 11368, 11369,
73 Ironworkers	11370, 11372,
94 Electricians	11373, 11374, 11375, 11377, 11378,
34 Steamfitters	11379, 11385
30 Teamsters	
25 Plumbers	
8 Asbestos	
4 Painters	
10 Mason	
4 Insulators	
5 Roofers	
7 Brick Layers	
2 Escorts	
4 Lathers	
2 Specialties	

We continue to work with the unions on a regular basis to help facilitate local workforce participation.
Other placements were also made outside of Tier 1 and Tier 2

Terminal Developer & Contractor Updates





Question: NYS Senator Leroy Comrie

1. Since Skanska hasn't hit their numbers, but they have 60% of the work done, how can we make sure those numbers go up and that there are still opportunities available? How will oversight be provided to ensure they reach their numbers?
2. Terminal One is earlier in the project with a new team but what is their plan to ensure they reach 40 % utilization?
3. What is going on with the Terminal Developer's promise to fund Councilwoman, Dr. Nanataha Williams STEAM Center on airport property?

Answer: Hersh Parekh

Terminal One will address their numbers in their report.

Re: Skanska, it will be important for the Port Authority , Community Advisor Council members and Skanska to work together to create a robust outreach program so that businesses; local women, minority and disabled veteran businesses know about the opportunities, able to access/bid on the opportunities, and the bids are competitive. There was a recent outreach event at the JFK Redevelopment Office focused on professional services. Those will continue be hosted so those businesses that can do the work, know about the work and can bid on the work. Skanska is the largest piece on the JFK Redevelopment Program and failure is not an option. At the highest level of the Port Authority, work is happening with Skanska to hit and exceed their goal. Work will continue with the Community Advisory Council helping to get the word out and help businesses with any barriers they may face.

The Port Authority is committed to providing funding for Councilwoman, Dr. Nantasha Williams Aviation STEAM Center in partnership with the other stakeholders she has engaged.

Answer: Anthony Peterson

Shared additional information that Skanska submitted updated numbers prior to the meeting that need to be vetted. Once vetted, their numbers should increase. The same with New Terminal One. Skanska & Terminal One get lists from Consultants with eligible businesses.

JFK Terminal 6 Redevelopment Project

Project Overview

 \$4.2 billion redevelopment project, with an anticipated development cost of \$2.8 billion.



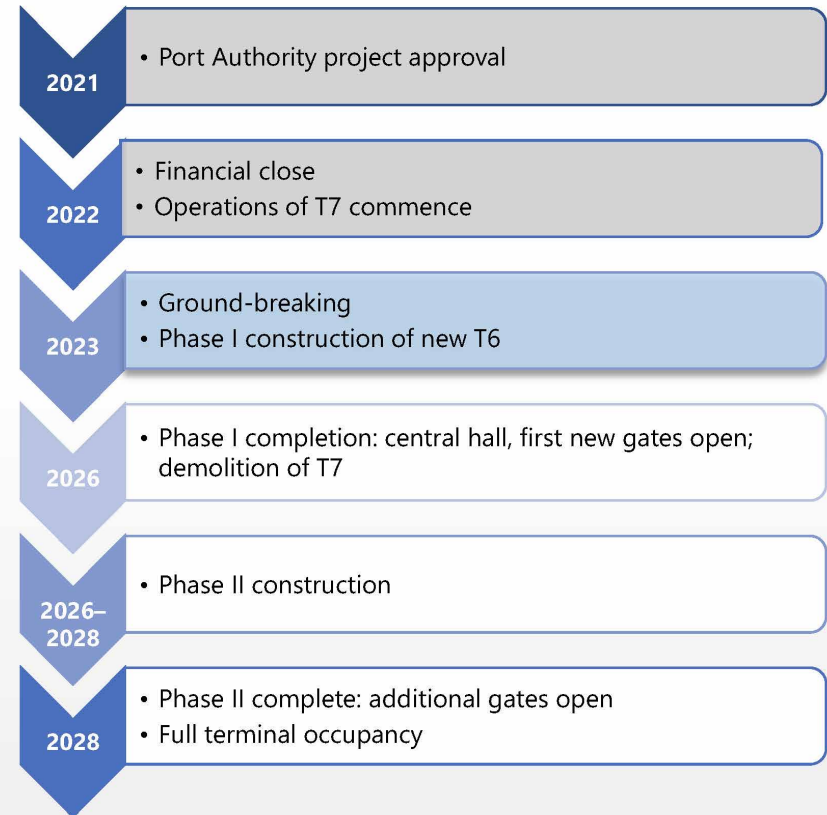
1.2 million sq. ft terminal complex, critical supporting roadways, utilities, aircraft apron, new ground transportation center & 60,000 sq. ft of concession and lounge space.

Supplier Diversity Initiatives



- M/WBE- 30%, MBE 20%, WBE 10%
- LBE- 10%
- SDVOB- 3%

Project Timeline



Welcome Karen Ali, new JFK Millennium Partners COO



Karen Ali

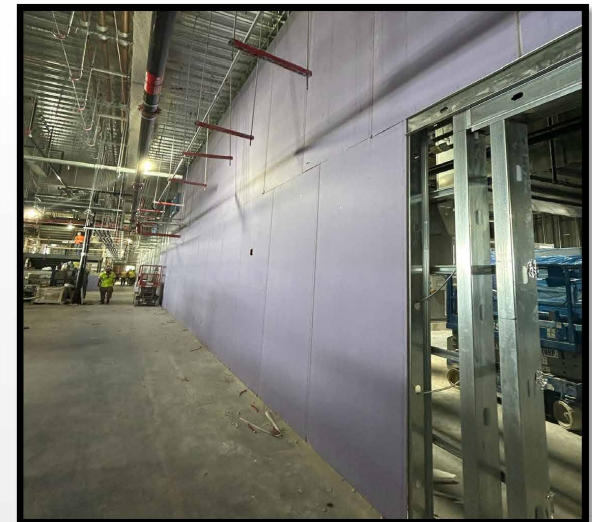
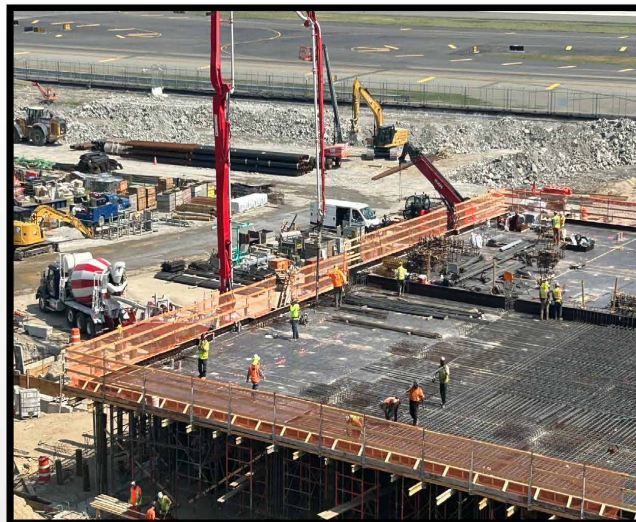
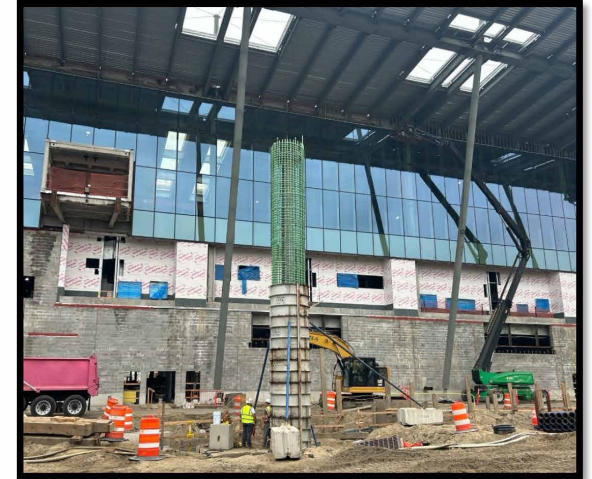
Chief Operating Officer

- Ali will develop and deliver a world-class plan that prioritizes operational excellence, guest experience, and financial performance at the existing Terminal 7, and at the new Terminal 6
- An accomplished senior professional with nearly 20 years of experience in operations management, project leadership, and business transformation across a range of sectors, including aviation



Terminal 6 Construction Updates

- Roofing, skylight, clerestory and exterior wall installation on south side of the terminal.
- Work continues with concrete slabs being placed on all deck levels.
- Phase 1 curtain wall fabrication continues with installation moving quickly.
- Roadway construction with piles driven and concrete being poured.
- Internal mechanical, electrical, and plumbing work along with installation of walls.
- Project construction remains on schedule.



Upcoming Procurement Bid Schedule

Upcoming Construction Trade Packages 30-60-90 Day Forecast

Bid #	Bid Package Description	Planned Issue Date
11A	Loading Dock Equipment	9/15/2024
11B	Food Service Equipment	9/15/2024
12A	Hold Room Furniture	9/15/2024
RFP 17	Employee Screening Checkpoint	9/16/2024
32B	Terminal Hardscapes	8/15/2024
32C	Terminal Landscaping	8/15/2024

To stay up to date on contracting opportunities, visit <https://www.anewjfk.com/work-with-us/work-with-jmp/>

Community Outreach Highlights



Queens Business Expo

JMP sponsored and exhibited at the event, offering information on the Terminal 6 project and available contracting opportunities.



Competitive Edge Conference

JMP participated on a panel discussion and provided insights on JFK Terminal 6 development opportunities.

JFKR Mini Camp- Cradle of Aviation

JMP sponsored the summer camp's trip to the Cradle of Aviation and attended the outing.



Gateway to Growth & MWBE Information Sessions

JMP continues to host ongoing MWBE information sessions and Gateway to Growth workshops on topics beneficial to the Queens community.

Online and Virtual Outreach Sessions

4/3/2024	Gateway to Growth - How to Get Pre-Qualified in Trade Tapp
4/17/2024	MWBE General Information Session
5/8/2024	Gateway to Growth - Responding to RFPS Rescheduled
6/19/2024	Gateway to Growth - Compliance & Contract Management
7/3/2024	MWBE General Information Session
7/26/2024	Gateway to Growth - Marketing to The Primes
8/7/2024	MWBE General Information Session
8/21/2024	Gateway to Growth - Access to Capital
9/4/2024	MWBE General Information Session

Project Success Stories



Eagle One Roofing **\$19,251,573 Award**

Queens-based contractor providing roofing services.

- Purchasing materials from B&B Sheetmetal (**Queens-based SDVOB**)
- Subcontracted to Monpat Construction Inc. (**Queens-based MBE**)



Ashnu International **\$4,240,000 Award**

Queens-based MBE contractor providing flooring services

- Currently working on the Terminal 6 carpet/VCT scope
- Worked on Building 111 office

Concessions Program Updates



ACDBE Single-Unit Operator

- Only available to **ACDBEs**
- Food and beverage in the **East Food Hall**



LBE Single-Unit Operator

- Only available to **LBEs**
- Food and beverage in the **East Food Hall**

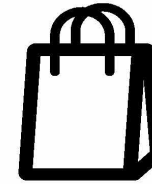
**Future opportunity available in
Phase 2 (late 2025)**

1 unit remaining



Packages Requiring Minimum ACDBE Participation

- Available to **all qualified concessionaires**
- **Food and beverage; retail; duty-free**
- Must include at least **35% ACDBE ownership (30% for duty-free)**
- **Closed to new applicants**



LBE / IOC Small Business Marketplace

- **Available to LBEs / IOC graduates only**
- **One unit reserved for IOC graduates only**
- **Retail or pre-packaged goods**
- **Short term deals in pre-built units and kiosks**
- **Outreach begins fall 2024!**

KEY HIGHLIGHTS

- Initial awards were announced in Spring 2024.
- 2 of 5 units in the East Food Hall will be operated by Tier I LBEs.
- Fantastic LBE/IOC participation throughout the procurement process.
- Additional phase II (2026) opportunity available for ACDBE/LBEs in upcoming procurements beginning late 2025.

LBE & IOC Marketplace Outreach

Robust outreach beginning this fall will include in-person and virtual sessions



Information Sessions

Provide an overview of **opportunities, eligibility requirements,** and **benefits.**



Access to Capital Information Sessions

JMP has partnered with the **Empire State Development** to provide information on **how to access funding** from its Capital Fund Program.



Gateway to Growth: Complete the RFP

Host **technical assistance** workshops on **how to complete and submit the RFP.**



Doing Business at the Airport Panel

Host a panel with **experienced concessionaires** to provide tips and answer questions about **operating at the airport.**



3 Sessions

2 Sessions

2 Workshops

1 Panel

October

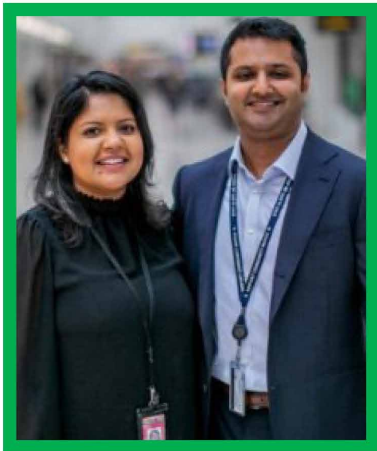
Mid-November

8 events in total!

First Information Session on October 8th
Co-hosted by Congressman Meeks, QBP Richards, and Speaker of NYC Council Adams

JFK T6 ACDBE/LBE Food Hall Operators

Two operators were awarded units in the East Food Hall



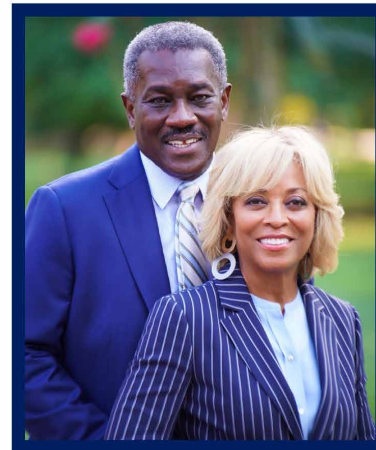
M & R Concessions

Monisha Singla and Rajiv Singla

100% Minority-owned ACDBE and Tier 1 LBE

M & R Concessions excels in delivering innovative concepts and exceptional customer experiences at JFK, backed by their proven success with 13 thriving operations.

M&R will operate **Di Fara Pizza** and **Alidoro**.



Olympic Supply

Sandy and Terri Roberts

100% Minority-owned ACDBE

Founded by this husband-and-wife duo, Olympic excels in aligning with airport cultures and delivering engaging customer experiences, tailored to the needs of passengers, airline personnel, and airport employees.

Olympic Supply will operate the **Fuku**, **Hanoi House** and **BKLYN BLEND** concepts

BKLYN BLEND recently completed the **PANYNJ's Institute of Concessions (IOC)**



First T6 Concession Partners Awarded!

Queens-based Business

PANYNJ Institute of Concessions Graduate

JFK Millennium Partners
A member of Vantage Airport Group

Dufry by Avolta ACDBE JV Partners

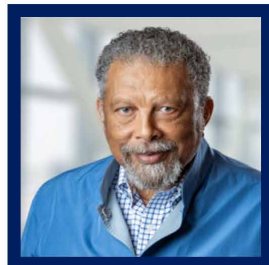
JFK T6 Duty Free Concessionaires Joint Venture includes **5 ACDBE joint venture partners** totaling **30% ACDBE** participation



Neir's Tavern
Loycent Gordon
Southeast Queens



Samantha Alexis Consulting
Samantha Sanchez
Southeast Queens



KELLEE Communications, Inc.
James R. Kelly
Atlanta, Georgia



Tsion Café
Beejhy Barhany
Harlem



Baked Cravings
Craig Watson
Harlem

Hudson Group by Avolta

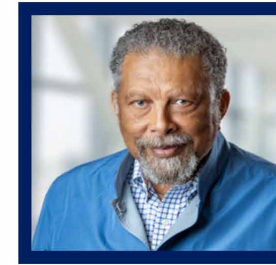
JFK T6 Retail JV partners include **3 ACDBE joint venture partners** totaling **35% ACDBE** participation



The Nourish Spot, Inc.
Dawn Kelly and Jade Kelly
Southeast Queens



Sullivan Hernandez Group, Inc.
Janise Hernandez-Frith
Long Island / Nassau County



KELLEE Communications, Inc.
James R. Kelly III
Atlanta, Georgia

18 international T6 artists announced in the NY Times...

Including Queens-based artist Kambui Olujimi!



High-Flying Artists for a Kennedy Airport Terminal

The new space will showcase works by Charles Gaines, Barbara Kruger and others.

By HILARIE M. SHEETS
John F. Kennedy International Airport's new Terminal 6, scheduled to open in 2026, will host installations by 18 contemporary artists from seven countries, the Port Authority of New York and New Jersey announced on Tuesday.

The \$4.2 billion terminal in Queens will showcase the largest number of works of any New York airport by major figures from the United States, including Nina Chanel Abney, Teresita Fernandez, Charles Gaines and Barbara Kruger, alongside emerging international talents such as Felipe Baeza from Mexico, Kerstin Bränsch from Germany, and Uman, born in Somalia (all now living in New York).

During the past four years, a broad range of public artworks have been unveiled by the Port Authority in new terminals at La Guardia Airport in Queens and Newark Liberty International Airport in New Jersey as the agency expands its popular art program. La Guardia's Delta Terminal has six permanent artworks that celebrate New York's energy and diversity and its Terminal B has five installations; Newark has two



observations about the cost. "for New York as a global I much needed local jobs," email. "I have concerns ab this money is being spent, c million on artwork seems i portunity for savings."

A striking feature of the t be 10 large-scale glass mo lions that create momenta ses working in this format Alvarez and Charline von established careers, and ri as Shara Hughes, Eddie M. Olujimi, Gailfee Park an Hawk.

Abney, Laure Pruvost a will make sculptural in pended from the ceiling, a and Sky Hopinka will pro For most of these artis Gaines and Kruger who ar ing wall pieces — it will be! ment public commissions i; according to Nicholas Ba; and executive director of Fund.

The organization reve; artists in the research pro; short list of candidates emp; mission proposals. The 18 ar; by a committee with rep;

Newark's Terminal A. "What you're seeing at J.F.K.'s Terminal 6 is the increased recognition of the impact and the importance of the art."

For J.F.K., the Port Authority has again teamed up with the Public Art Fund, the New York-based nonprofit that led the commissioning of the installations at La

Top, from left, Charles Gaines, Laure Pruvost, Kerstin Bränsch, Nina Chanel Abney, Nevita

- ❑ Selected to realize a new commission for JFK Terminal 6 – a 16ft wide glass mosaic medallion.
- ❑ One of 18 international artists, including 10 artists from NYC selected for the permanent art collection.
- ❑ Kambui has created projects for Times Square Arts' Midnight Moment and a permanent work for MTA Arts.



An aerial photograph of the JFK International Airport Central Terminal Area, showing roadways, parking lots, and the terminal building. The image is overlaid with a dark blue gradient. The text is centered in white, bold, uppercase letters.

JFK INTERNATIONAL AIRPORT CENTRAL TERMINAL AREA ROADWAYS, UTILITIES, AND GROUND TRANSPORTATION CENTER PROJECT

SKANSKA  **HALMAR**

JFK JOINT VENTURE

Project Overview

Project Description

- Utility Relocations
- Bridge Rehab and Replacements
- 400-foot-long elevated pedestrian bridge, pedestrian canopies
- 2,000 space Parking Garage

Size

- \$1.24 Billion

Schedule:

- Start date: May 2023
- Final Completion: December 2027



Progress Photos NORTH



Progress Photos SOUTH



Progress Photos EAST



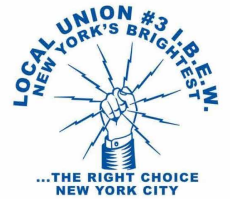
Outreach Progress

09/11/24 – SHJV & KS Engineers: Prof. Services Outreach Event
08/27/24 – SHJV 1-on1 Scheduled Meetings with Local M/WBEs (ongoing)
07/17/24 – The Competitive Edge Conference, opportunities and contact information provided
07/11/24 – NYS MWBE Regional Opportunities Expo, opportunities and contact information provided
06/07/24 – LaGuardia Small Business Services Gov't & Business Matchmaker, opportunities and contact information provided
05/16/24 – Queens Chamber of Commerce NYC Small Business Event, opportunities and contact information provided
04/17/24 – Building Inclusivity 2024: A Construction Industry DEI Summit, opportunities and contact information provided
03/28/24 – General Contractors Association of NY M/WBE Expo, opportunities and contact information provided (pictured to the right)
03/14/24 - SHJV hosted a Meet The Prime Event @ JFK Redevelopment Information Center



Success Story: AM NY Electric Corp.

- Local Queens MBE Electrical Contractor
- Owner Andre Moseley
- Specializes in New Construction & General Maintenance of Electrical Systems, Lighting / Control Systems
- Local 3 IBEW Union Contractor
- Regularly attends outreach events networking with multiple Agencies, Electrical Primes, and other M/WBEs
- Attends SHJV 1-on-1 meeting sessions at the JFK Redevelopment Information Center
- Contracted for \$500K+ on JFK RUGTC
- Successful completion of SHJV contract plus currently performing change order work



SHJV Opportunities

- Skanska Halmar JFK Joint Venture continues to update procurement opportunities on the project website link or scan QR code below:
 - <https://www.anewjfk.com/work-with-us/work-with-shjv-roadways-and-gtc/>
- For questions about procurement opportunities or to schedule 1-on-1 meetings, please email SkanskaHalmarJFKJV@skanska.com



Thank you!





JFK TERMINAL 8

COMMERCIAL PROJECT UPDATE

SEPTEMBER 16, 2024



JFK TERMINAL 8: COMMERCIAL PROJECT OVERVIEW



TERMINAL OPERATOR &
PRIMARY CARRIER, JFK T8



THE CREATOR & OPERATOR
OF SUSTAINABLE
DESTINATIONS



MINORITY-OWNED
INVESTOR IN CRITICAL
INFRASTRUCTURE



QUEENS-BASED MWBE FIRM
—EXPERTS IN DEI &
TECHNICAL ASSISTANCE

- Builds on **\$400M T8 Expansion project** completed by American Airlines in 2022
- **\$125M** investment to transform customer journey
- NYC-inspired destination—**60 concession units**
- Exclusive first-to-market & local brand partners
- Est. **24-month** development period



KEY PROJECT UPDATES

Since the last JFK CAC Meeting...

Base Building Capital Construction

- Capital work commenced Q2
- Additional bid packages coming in Q4

Tenant Construction

- Tenant construction Q2 2024 through Q4 2025
- Tenant design opportunities ongoing through Q2 2025

LBE Retail Accelerator

- First 6 opportunities awarded and pending final contract negotiations ahead of announcements
- Opening Q4 2024

Seasonal Art Showcase

- Three additional artists chosen from local artist submissions, to participate in Seasonal Artist Showcase, "A Traveling Dream" series, curated by Vaughn Bentley Creative



"A Traveling Dream: Reverie," curated by Vaughn Bentley Creative currently on display in JFK T8

CONCESSIONS HIGHLIGHTS

U.S. AIRPORT FIRSTS & LOCAL FAVORITES TO BE ANNOUNCED

Upcoming Announcement Highlights

Announcement 1 of 2:

September 2024

21 brands with 27 terminal locations:

- 40% NYC-based
- 30% of operators are tiers 1-3 (23% Tier 1)
- (9) US Airport firsts
- (7) Brand-direct operations
- (4) Local 100% ACDBE Operators
- Powered by local Joint Ventures TBA

Future Announcement Highlights

Announcement 2 of 2:

Q4 2024 or Q1 2025

- Duty Free Awardee & local highlights
- Food Hall Awardee & local highlights
- Small Business Accelerator Program Awards & local stories
- Remaining brand and terminal locations; including IOC grads

CONCESSIONS: UPCOMING OPPORTUNITIES

Creating flexible entry points for small local diverse-owned businesses

LOCAL CONCESSIONS OPPORTUNITIES
FOOD & BEVERAGE, RETAIL & PRODUCT

URW SMALL BUSINESS RETAIL AND F&B OPPORTUNITIES
FOCUS: PRODUCT

WEDNESDAY
SEPTEMBER 18
9 A.M. - 12 P.M. ET

IN-PERSON

QUEENS CHAMBER OF COMMERCE
The Bulova Building
75-20 Astoria Blvd, Suite 140
Jackson Heights, NY 11370

WHO SHOULD ATTEND:
Local businesses & entrepreneurs interested in providing wholesale product - both retail and food products - to others for sale in the terminal. Learn about retail product, food brand and product opportunities and what is a fit for your business.

THE NEW TERMINAL ONE
JFK T8
Queens Chamber of Commerce
American Airlines
EMILIO AGUARDI RESTAURANT
JFK

SCAN TO REGISTER
urwairports.com/newterminalone
thenewjkt8.com

Upcoming Concessions Outreach Events

IN-PERSON EVENT: URW Small Business Retail and F&B Opportunities – Focus: Product (Sept 18)

- Learn about product wholesale opportunities and meet the prime concessionaires
- Learn what offers are a good fit for airport customers and food brand & product opportunities

INVITE-ONLY EVENT: ACDBE EQUITY / JOINT VENTURES Focus: Joint Venture Opportunities (Sept/Oct TBC)

- Learn about upcoming joint venture opportunities for certified and funded ACDBE partners
- Meet Prime Operators who have the desire to connect with local joint venture partners
- Invite only: If you are interested, please reach out to RFW to confirm certification status and funding abilities

D&C CONTRACTING: UPCOMING OPPORTUNITIES

URW Base Building Work

Primary Scopes:

- Electrical
- Plumbing
- Architectural Elements
- Carpentry

Timeline:

- **Q3 2024** Holt Construction Bid Package Release
- **Q4 2024** Award of Contracts
- **Q4 2024** Commencement of URW Capital Work

Tenant Buildout Work

Timeline:

- Architectural/Engineering Ongoing Through **Q2 2025**
- Construction of Spaces Ongoing Through **Q4 2025**

Upcoming D&C Outreach Events

To Be Announced Soon

VIRTUAL EVENT: "Meet the Terminal 8 GCs" (Q3 2024)

Who Should Attend: Construction subcontracting/trade firms interested in connecting with Tenant General Contractors (GCs) for store buildouts.

- **What to Expect:** A special series of virtual networking opportunities to meet Terminal 8 Tenants, along with their design and construction teams to explore new contract opportunities for retail and food & beverage fit-outs.

VIRTUAL EVENT: Meet the Terminal 8 Tenants (Q4 2024)

- **Who Should Attend:** Construction subcontracting/trade firms interested in connecting with tenants for store buildout.
- **What to Expect:** A special virtual networking opportunity to meet Terminal 8 Tenants, along with their design and construction teams to explore new contract opportunities for retail and food & beverage fit-outs.

Ongoing – Tenant General Contractor / Local Business Matchmaking

COMMUNITY OUTREACH

T8 Partners has hosted 8 events with 1,054 attendees since May 2024

Date	Topic
5/9/24	T8 LBE Retail Kiosk Accelerator Application Overview and Q&A (Virtual)
6/26/24	JFK T8 Meet the FH Operator – Pitch Event (In-Person, invite only)
7/9/24	JFK T8 Tenant AED&C Opportunities Session 1
7/22/24	JFK T8 Tenant Construction Session 2
8/5/24	JFK T8 Tenant Construction Session 3
8/19/24	JFK T8 Tenant Construction Session 4
8/21/24	URW Small Business Retail and F&B Opportunities (Pre-Cursor to In-Person Event) (T8/NTO) (Virtual)
9/9/24	JFK T8 Tenant Construction Session 5



Office Hours	Time
Monday - virtual	12:00 – 2:00 PM
Thursday - in-person	2:00 – 4:00 PM

COMMUNITY ASSESMENT & TECHNICAL ASSISTANCE

LBE Engagement: One-one business assessments conducted with 28 LBE Tier 1 & Tier 2 candidate firms identified through outreach events and registrations since November 2023.

• **Technical Assistance:**

- **70+ firms** have received technical assistance from our team since project launch
- Personalized 1:1 support to assess the capacity & experience of each business
- We provide guidance on the appropriate opportunities, entry points, and next steps for each business

TECHNICAL ASSISTANCE SUCCESS STORY:

Portland Island Jerk Queens, NY

This Caribbean food vendor operates a Brooklyn restaurant and multiple food trucks. With the assistance of the R.F. Wilkins Team at the JFK Community Information Center, Mr. Roache has created a strategy to pursue concessions opportunities as he completes the certification process.





SCAN HERE TO REGISTER FOR BUSINESS
OPPORTUNITIES OR TO STAY IN TOUCH WITH
FUTURE OPPORTUNITIES & EVENTS

CONTACT US AT:
INFOT8@RFWCONSULTANTS.COM



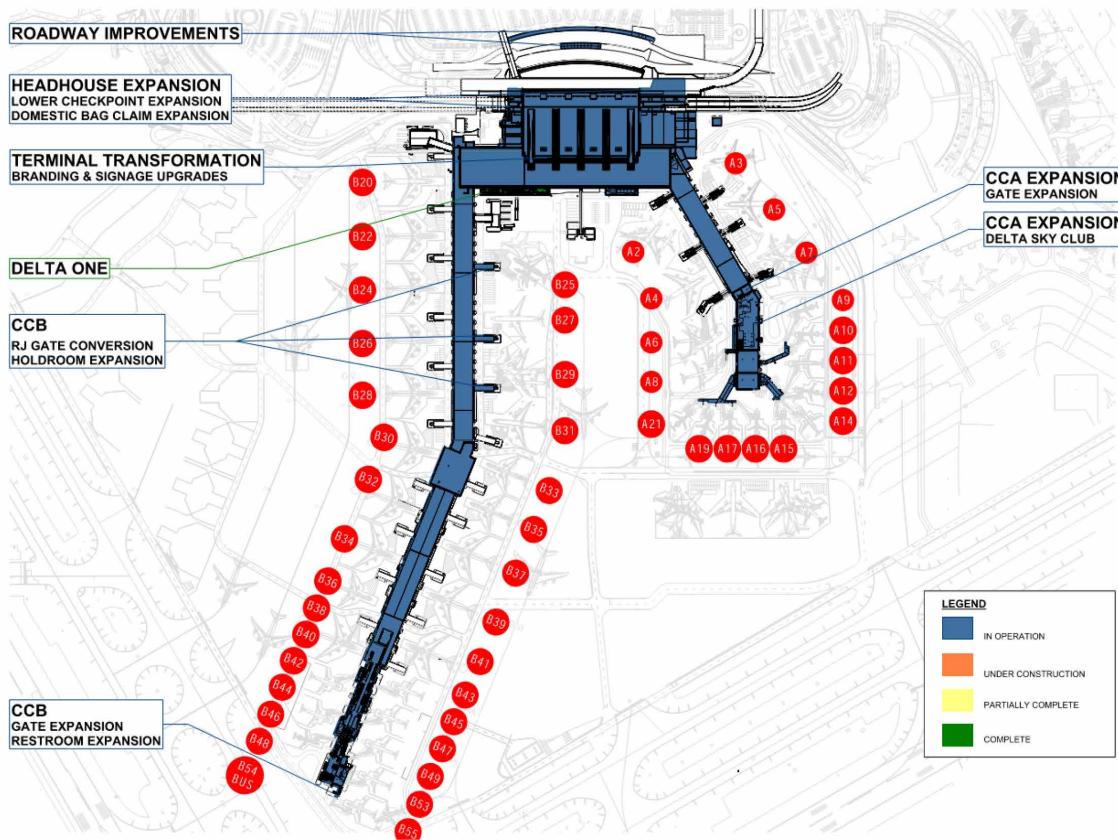
JFK TERMINAL 4 EXPANSION | PROGRAM UPDATE

JFK REDEVELOPMENT ADVISORY COUNCIL MEETING

September 16, 2024

| JFKIAT |

PROGRAM SUMMARY | CONSTRUCTION



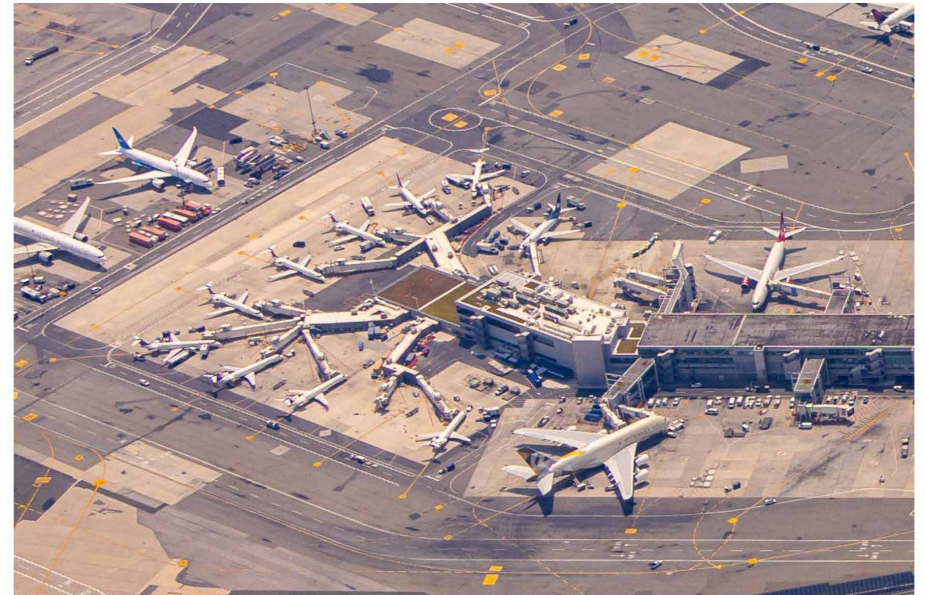
The Terminal 4 expansion program is complete. Below are some of the program's highlights:

1. Construction commenced in December 2021
2. 10 new domestic gates added to an extended Concourse A, which allowed Delta to consolidate into Terminal 4 in January 2023
3. 2 new airside lounges.
4. Improved capacity at the security check points, gate holdrooms and baggage claim areas.
5. In total, approximately 200,000 SF of new terminal space was added to the existing terminal with very little impact to customer experience.

PROGRAM SUMMARY | CONSTRUCTION



December 2021 – Groundbreaking



Today

KEY MWBE AND LOCAL PARTNERS – PROGRAM MANAGEMENT

Haydan Consultants, Inc.

PANYNJ MBE Certified, Rosedale, NY

Contract Value = \$1,597,837

“As a local, minority-owned small business, we greatly appreciate the opportunity to work with Delta and help deliver this world-class project. They have been an incredibly supportive partner and a pleasure to work with from the very beginning.”

*Dan Sawh
Founder & Principal*



KEY MWBE AND LOCAL PARTNERS - DESIGN

5D Architecture & Engineering, PLLC

PANYNJ MBE Certified, Springfield Gardens, NY

Contract Value = \$1,023,681

“The Delta Construction Management Team made the impossible possible for my firm.”

-Jackman Prescod PE, President/CEO 5D Architecture



Challenge

Delta needed a skilled firm that could quickly jump in to provide surveying and design support services for a parking lot that was being developed for construction worker parking.

Solution

5D, Queens based Architectural and Engineering Firm, rose to the challenge, and presented a unique solution whereby they would use drone technology to provide topographic surveying in less time than traditional site surveying.

Result

5D received FAA clearance to perform a drone survey of the parking area at JFK. This drone surveying technology was able to shave two weeks off the overall design and permitting process.

KEY MWBE AND LOCAL PARTNERS – CONSTRUCTION

Cross Island Mechanical, Corp.

PANYNJ MBE Certified, Ridgewood, NY

Contract Value = \$14,429,440

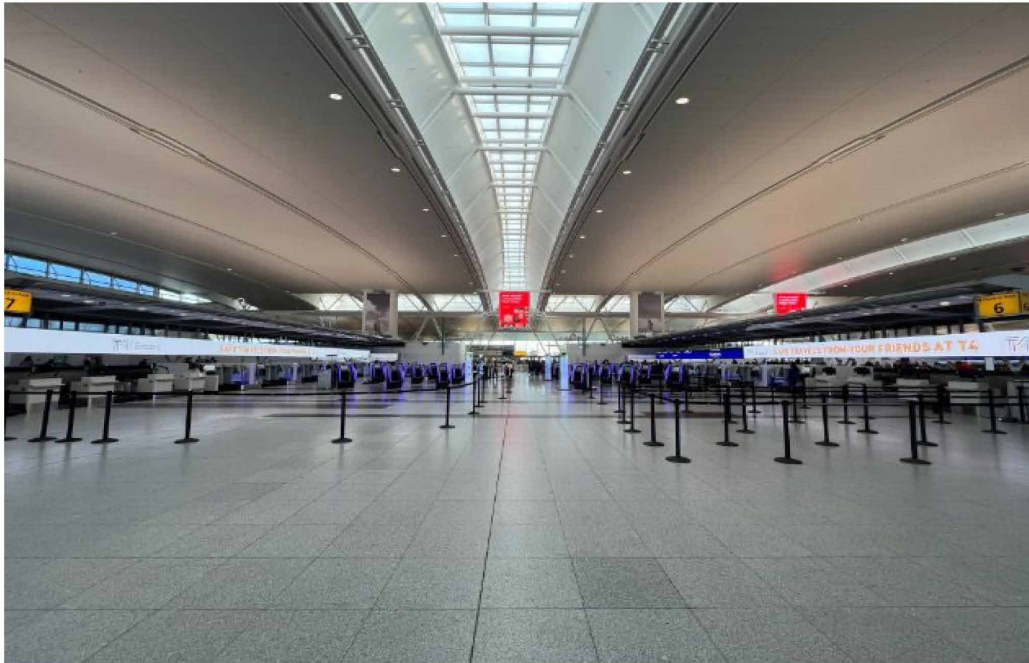
As a local, minority-owned business, we greatly appreciate the opportunity to work with Delta to deliver a high quality and fast-track project. We are proud to demonstrate to all stakeholders the true capabilities of a qualified local and minority owned business. We look forward to continuing our relationship with Delta and PANYNJ.

Kristopher Shaw
President



TERMINAL | TRANSFORMATION

The Terminal 4 Transformation is a component of the Terminal 4 Expansion and Redevelopment program. This program, at \$154m is the basis for Terminal enhancements which will optimize areas of the Terminal holistically. These elements focus on People, Processes, Place and Technology. Together with the Delta Redevelopment and expansion, the Terminal Transformation program is an integral part of the overall Airport Vision Plan of transforming JFK into a World Class airport. Areas of Transformation have been fundamentally prioritized within the \$1.5b Terminal 4 Expansion plan to match this vision.



| JFKIAT |

The Transformation Work is comprised of the following seven main elements:

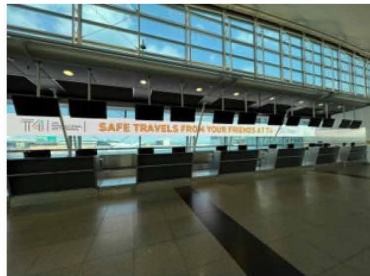
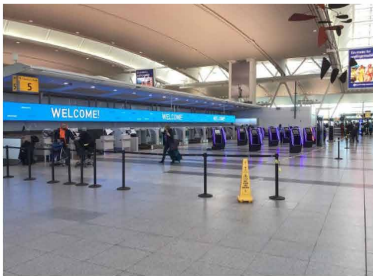
1. AirTrain Infill and Ticket Desk Relocations
2. Amenities and Restrooms
3. Departures Hall Renovations
4. Artwork Program
5. Concourses A & B Holdroom Renovations
6. Commercial (Concessions) Upgrade
7. One JFK Branding and Signage Upgrades

CONSTRUCTION UPDATE | COMPLETED CONSTRUCTION PROJECTS



AirTrain Infill and Ticket Desks Relocation

Activation of new Desks:	November 2023
Status:	Complete
Full Activation (East - West):	February 2024
Status:	Complete



Departures Level – Check In Renovations

Rows 5-9	July 2024
Status:	Complete
Backwall LED Signage (all rows)	July 2023
Status:	Complete



Restroom Renovations

Phase 1	August 2023
Status:	Complete
Phase 2	December 2023
Status:	Complete

CONSTRUCTION UPDATE | ACTIVE CONSTRUCTION PROJECTS

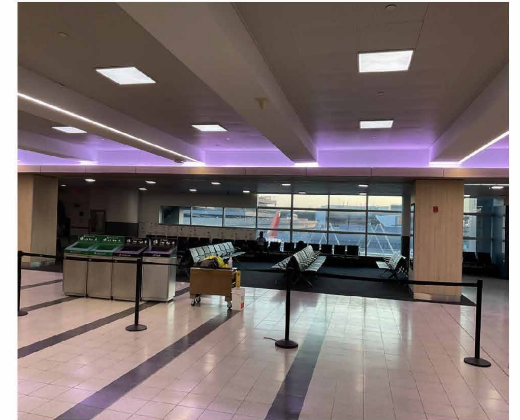


Restroom Renovations

Phase 3	April 2024
Status:	COMPLETE

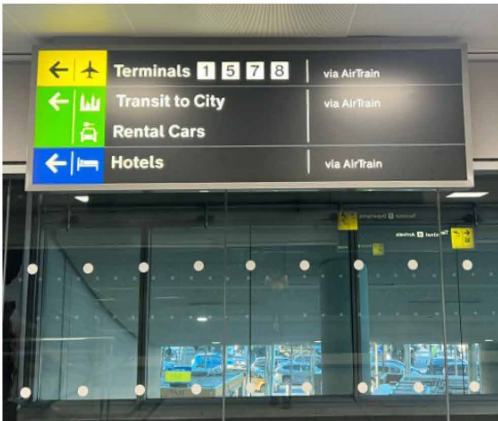
Holdroom & Terminal Finishes

Concourse A	February 2025
Status:	On Track
Concourse B	February 2025
Status:	On Track
Arrivals Hall	In design
Status:	TBD
Retail Hall	December 2024
Status:	On Track



One JFK – Terminal Signage

Package 1	May 2024
Status:	COMPLETE
Package 2	December 2024
Status:	On Track



TERMINAL | 4 GOOD PROGRAM – JUNETEENTH & JOB FAIR

TERMINAL |

T4 | 4 GOOD PROGRAM |

Level 1



- Together with our partners at the Port Authority, T4 hosted our second annual Juneteenth celebration
- Discussions on its history and impacts on our society and our community
- This helps us foster strong relationships and support the institutions of New York's most diverse borough
- A panel led by leaders in aviation, and local politicians included, City Council Member Nantasha Williams, Assemblyman Clyde Vanel, Eboni Wimbush of the Airport Minority Advisory Council, Vernon M. Taylor of JFKIAT, and guest speaker Assemblywoman Alicia Hyndman.
- Post celebration, job fair attended by 800 job seekers from the community

TERMINAL | 4 GOOD PROGRAM



Bethany Baptist Church



August Martin High School



Jamaica Bay Wildlife Refuge

- Aimed at promoting educational, social, and professional success, the 4GOOD program consists of two components: Community and Sustainability
- Our motto is simple: **A strong community yields a strong future**
- JFKIAT is investing in our community by creating **professional and educational opportunities** through philanthropy, **Sustainability and Diversity & Inclusion**

TERMINAL | T4 IS MORE – PRIDE DAY CELEBRATION



As part of our ongoing commitment to Diversity, Equity, and Inclusion (DEIB) efforts, JFKIAT, and our Terminal 4 business partners were thrilled to march, sponsor, and support the Queens Pride Parade.

At JFKIAT, we believe in fostering a culture of trust and belonging for all, both within our terminal and in the vibrant Queens community. From sponsoring events to partnering with organizations like the [LGBT Network](#), we're dedicated to championing diversity and celebrating love in all its forms.

Thank you to everyone who helped make Queens Pride an unforgettable celebration of equality and unity.

TERMINAL | T4 IS MORE – TOOLS & TIARAS



In July, JFKIAT, in collaboration with Holt Construction, hosted a special event with Tools & Tiaras, a Jamaica, Queens-based organization dedicated to demonstrating to girls ages 6-14 that careers are not defined by gender. Through hands-on workshops and summer camps focused on skilled trades, Tools & Tiaras is paving the way for future women in the workforce.

The event began with an inspiring discussion featuring women leaders from the aviation industry, followed by a session on construction and operational safety. Participants enjoyed a tour of Terminal 4 and had the opportunity to view operations from the 7th floor of the Air Traffic Control Tower.

The girls also visited a Holt Construction site where a future Terminal 4 lounge is being built. They engaged in various hands-on activities with women from different trades—learning about electricity, plumbing, getting to paint a wall, and using a screw gun.

The event wrapped up with a Q&A session, a light lunch, and a special visit from a female pilot. The day was filled with memorable moments and valuable lessons, leaving the girls inspired and excited about the possibilities ahead.

World-Class New Terminal One Team



Financial
sponsors

ferrovial

JLC

MJE-Loop
Capital Partners

Ullico

CARLYLE

THE NEW TERMINAL ONE

JFK INTERNATIONAL AIRPORT

Management Services
Agreement

ferrovial
airports

Capital Project
Delivery

ferrovial
construction



AtkinsRéalis

LEHRER CUMMING
A CUMMING COMPANY

Design-Build

AECOM TISHMAN

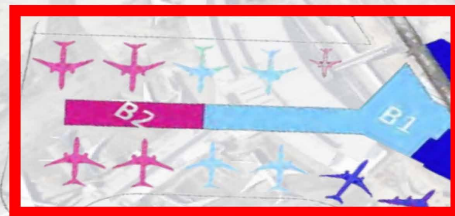
Gensler

Concessions
Manager

W
UNIBAIL-RODAMCO-WESTFIELD

THE NEW TERMINAL ONE
JFK INTERNATIONAL AIRPORT

International Only Terminal: Gateway to New York & U.S.



Phase A (2026)

- Total footprint: 1.8 million sq ft
- 14 widebody gates
- 120,000+ sq ft leasable concession space

Phase B (2030)

- RFPs released:
 - *Topographic Survey*
 - *Geotechnical Investigation*
- 300,000+ sq ft of retail, dining, lounge and recreational space

Existing Terminal One	New Terminal One
Opened in 1998	Complete in 2030
10 gates	23 gates
0.7 million sq ft building	2.6 million sq ft building
45-acre footprint	134-acre footprint
5.8 million passengers (2023)	16+ million passengers (anticipated traffic in 2030)
Capacity: 7 million passengers	Capacity: 23 million passengers

The New Terminal One Progress

April 2024

- Vertical Transportation

May 2024

- Slab on Deck Headhouse
- Successful issuance of \$2.22 billion in Green Bonds

June 2024

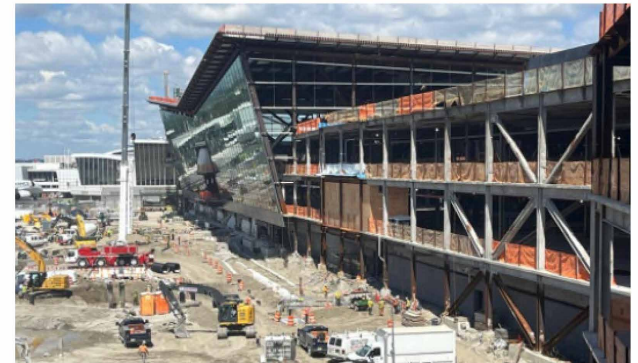
- Baggage Handling Service start

July 2024

- Completion of “bow tie” feature on the headhouse roof
- Weather tight

August 2024

- Steel erection on East Pier complete
- Topping off of East Pier
- First airline lounge announced: Korean Air



M/WBE SDVOB & the Local Community Engagement

Procurement & Opportunity Events

- MWBE Events (NTO and Port Authority) – 17
- MWBE Information Sessions (Virtual)
 - Number of Events – 7 / Total Number of People (Registrants) 1690
- Meet the Prime Events (In Person)
 - Number of Events – 7 / Total Number of Registrants – 1200 (Registrants)
- Total 2890 Touchpoints

Community Events

- Community Outreach Events (Tabled)
 - Number of Events – 13 / Total Number of People (attended) – 15,769
- Individual Engagements (Elected Officials, JFKRCAC, CBOs)
 - Number of Meetings – 42 / Number of People - 105

Thank you to our partners;

- | | |
|---|---|
| <ul style="list-style-type: none"> • Congressman Gregory Meeks • Queens Borough President Donovan Richards • Senator Leroy Comrie • Senator James Sanders • Assemblywoman Alicia Hyndman • Assemblyman Khaleel Anderson | <ul style="list-style-type: none"> • Councilwoman Dr. Nantasha Williams • Councilwoman and NYC Council Majority Whip Selvena N. Brooks – Powers • Queens Chamber of Commerce, RDRC • GJDC |
|---|---|



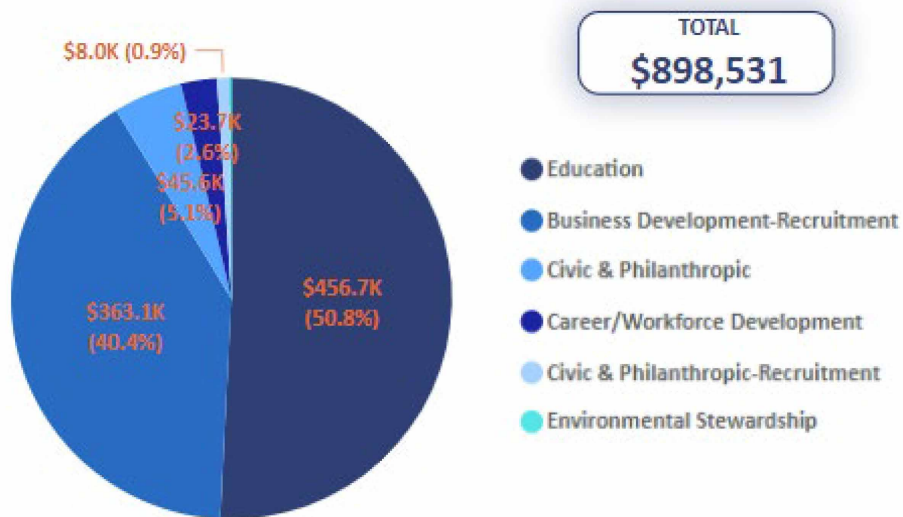
NTO's Back to School Supply Campaign

- The NTO team has provided much-needed resources to the community including over **5,400** school supplies to families in the local community. Partnering with elected officials and local organizations including
 - Senator Leroy Comrie
 - Assemblyman Clyde Vanel
 - Assemblywoman Alicia Hyndman
 - Assemblyman Khaleel Anderson
 - Councilwoman Selvena N. Brooks-Powers
 - Councilwoman Dr. Nantasha Williams
 - Crescent Street Construction Corporation



Community Investment

Community Engagement Investments



Expanding Opportunities for Local Businesses



Name: **Rincon Salvadoreño Restaurant**

Location: **Jamaica, NY**

Rincon is a family run business in the heart of Jamaica, Queens. Established in 1980, they are considered "El Pionero" as they were the first Salvadoran restaurant to open in New York. NTO has been pleased to have Rincon cater at Building 111 and multiple Meet The Prime events.

Rincon is a Tier 1 certified MWBE and a graduate of the JFK Institute of Concessions Cohort #1. NTO met Rincon at a JFKR outreach event.



**Elena Barcenes
Owner**

Name: **Veteran Electrical Supply, Inc.**

Location: **Richmond Hill, NY**

Veteran Electrical is a Certified Service Disabled Veteran Owned Business and Minority Business Enterprise located in Richmond Hill. Veteran are a distributor of electrical and lighting supplies throughout the State of New York.

Veteran is a Tier 1 certified WBE/SDVOB and has been awarded \$4.9M in contract work.



Expanding Opportunities for Local Businesses



Name: **Vivid Health**
Location: **Laurelton, NY**

Vivid Health create positive lifelong health programs through education, training, and raising awareness. Vivid provides CPR/AED, First Aid Didactic and Practical Training, and lasting health and wellness programs through a holistic approach.

***Vivid Health is a Tier 1 certified MBE and has been awarded \$10K in contract work.
NTO first met Vivid Health at the JFKR Community Information Center***



Al Adams
CEO

Name: **Tonnage Heating & Cooling**
Location: **Queens, NY**

Tonnage has over 30 years of combined experience and is focused on helping our customers with reliable and helpful HVAC services. Tonnage develops better solutions for its commercial clients by applying the best techniques in HVAC services.

Tonnage is a a certified MBE in Tier 1 and has been awarded \$15M in contract work.



Operations & Maintenance Procurement Opportunities

Q2– Q4 2024

GSE Pooling – all electric ground service equipment

Implementation of IBM Maximo

Guest Experience Training

Third Party Lounge Operator

Snow Removal Services – Curbside and Airside

Fixed Furniture & Equipment

Security Services Provider

Phase B: Topographic Survey and Subsurface Utility Exploration

Phase B: Geotechnical Investigation

Learn more about these opportunities by emailing
procurement@onejfk.com

Design Builder Subcontracting Opportunities

CONTRACTING SCOPES

Main Entry Sliding Doors

Detention Doors & Hardware

MEET THE PRIMES SUBCONTRACTING OPPORTUNITIES

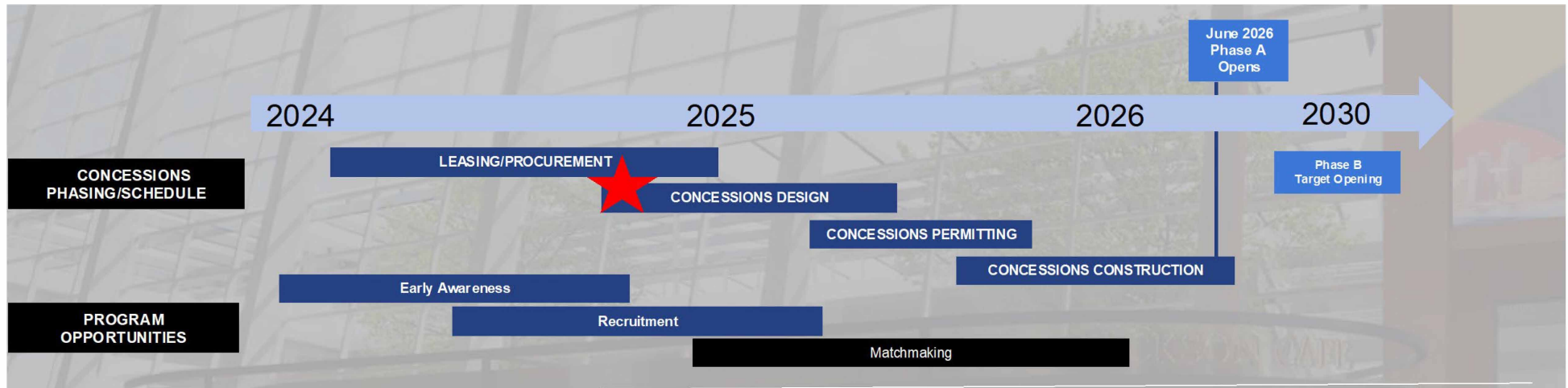
Carpentry

Electrical

Mechanical

Plumbing

NTO Concessions Program Updates



Leasing Updates:

Duty Free: Required 5% local product SKU, min. 30% ACDBE JVs. Announcement targeted Q4 2024

Travel Essentials: Required 5% local product SKU, min. 30% ACDBE JVs. Announcement targeted Q4 2024

Luxury Retail: Direct negotiations ongoing with hyper local operator + ACDBE partners. Announcement targeted Q2 2024

Food Hall: RFP Active. Incorporating NYC-based brands and operators

Community Outreach

Sept. 18: Wholesale Product Program (Queens Chamber of Commerce)

Sept. 26: Invite- Only ACDBE Equity Partner Meet & Greet (Greater Nexus)

Nov. 13: Small Business/Wholesale Product Provider Program (Queensborough Hall)

Dec. 4: NTO Retail and F&B Opportunities (Virtual)

Jan. 22: NTO Meet the Concessions Operators Primes (In-Person)

Questions & Inquiries:

infourw@rfwconsultants.com

Wednesday In-Person Office Hours at the JFKR Office



Next Event: Wednesday September 18

Are you wondering if this event is for you?

Product Providers:

Do you have a wholesale product you are interested in having others sell in the terminal?

Operators:

Are you interested in learning more about available products?

Then this event is for you.

Stop by our table tonight!

LOCAL CONCESSIONS OPPORTUNITIES

FOOD & BEVERAGE, RETAIL & PRODUCT

URW SMALL BUSINESS RETAIL AND F&B OPPORTUNITIES FOCUS: PRODUCT

WEDNESDAY
SEPTEMBER 18
9 A.M. - 12 P.M. ET

IN-PERSON

QUEENS CHAMBER OF COMMERCE

The Bulova Building
75-20 Astoria Blvd. Suite 140
Jackson Heights, NY 11370

WHO SHOULD ATTEND:

Local businesses & entrepreneurs interested in providing wholesale product - both retail and food products - to others for sale in the terminal.

Learn about retail product, food brand and product opportunities and what is a fit for your business.

THE NEW TERMINAL ONE
JFK INTERNATIONAL AIRPORT

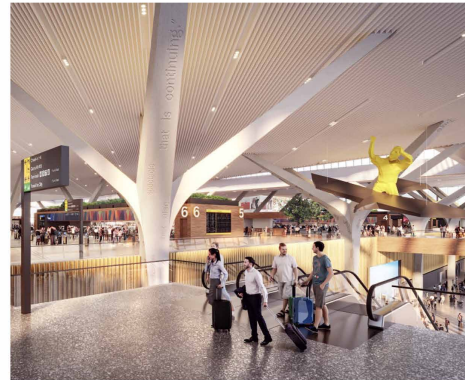


SCAN TO REGISTER
urwairports.com/newterminalone
thenewjfk8.com

Art & Branding

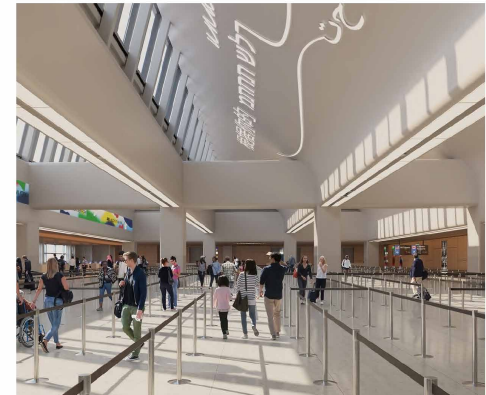
- Issued Spring/Summer 2024

- Issued RFPs for 21 shortlisted artists for 8 terminal locations including international and national artists
- Solicited local film makers to participate in “neighborhood defining” film projects to be highlighted throughout the terminal media program.



- Fall 2024

- Working with the Jamaica Counsel for the Arts (JCAL) to develop a proposal for Queens local and NYC emerging artists
- Developing an ART Program for Community Engagement



Stay Connected

Register for 1-on-1 Meetings

- **Virtual:** Daily from 9 a.m. to 5 p.m. ET
- **In-Person:** Wednesdays from 12 to 5 p.m. ET
JFKR Community Information Center
144-33 Jamaica Ave, Queens, NY 11435

Email Us

Concessions: infoURW@rfwconsultants.com
All other inquiries: info@onejfk.com

Learn More

www.anewjfk.com/projects/the-new-terminal-one/

THE NEW TERMINAL ONE
JFK INTERNATIONAL AIRPORT

THE NEW TERMINAL ONE
JFK INTERNATIONAL AIRPORT

M/W/LBE, SDVOB & ACDBE
INFORMATION SESSION

ATTEND VIRTUALLY
VIA ZOOM

TUES, SEPTEMBER 17, 2024
1:00 - 2:00 PM

TOPICS INCLUDE:
• Project Update
• Upcoming Opportunities
• Prequalification
• Q&A

REGISTER HERE

SCAN THE QR CODE

For more information, visit www.anewjfk.com

JFK AECOM TISHMAN UNIBAIL RODARCO WESTFIELD

Join us for the
NEW TERMINAL ONE
MWLBE ACDBE SDVOB
Virtual Information Session
Tuesday, September 17
1:00 PM

Follow Us



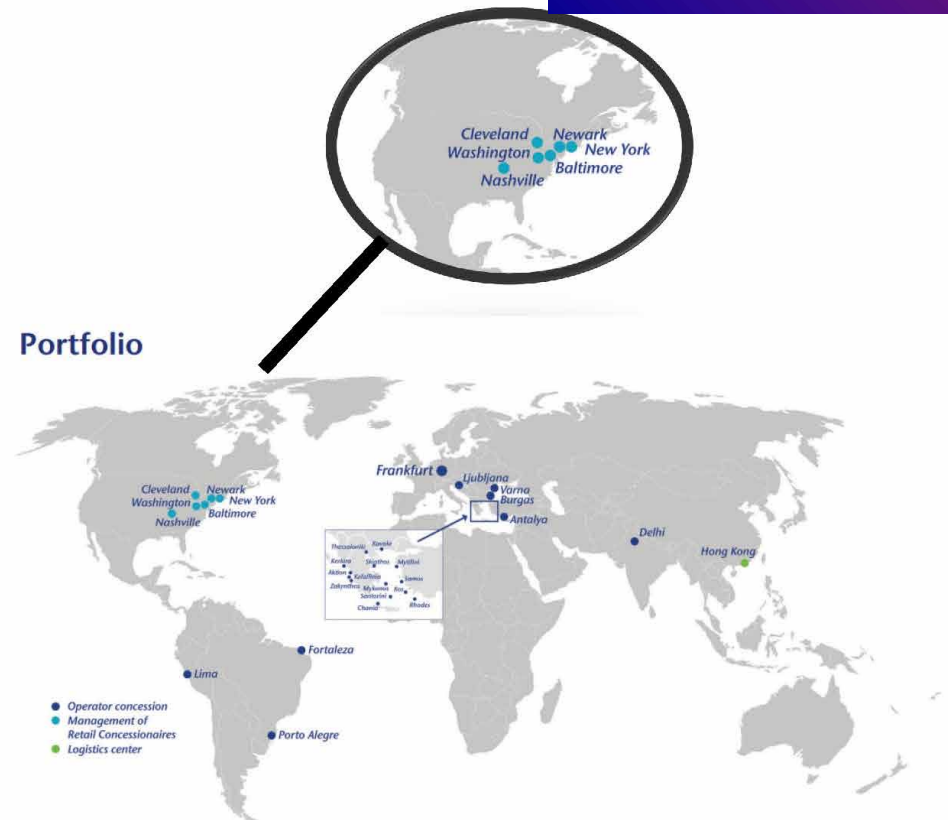
@The New Terminal One at JFK



@thenewterminaloneatjfk

ABOUT FRAPORT USA AND FRAPORT AG

- Fraport USA and Fraport AG are shaping the future of airport travel.
- Fraport's portfolio spans 4 continents and activities in 30 airports. Our team of aviation experts and multi-disciplined airport professionals has a proven track record across 7 U.S. airports.
- Focused on passenger delight and consistent revenue growth in North America.
- We have the resources, reputation, and agility to transform the airport experience.
- Fraport USA reimagines air travel with innovative passenger engagement, local concessions, and sustainable operations.



FRAPORT AND JETBLUE PARTNERSHIP AT JFK T5



- JFK Terminal 5 is an iconic part of New York's aviation.
- **Fraport USA is JetBlue's Concessions Developer and Manager at JFK T5.**
- Creating a vibrant, diverse environment reflecting New York's character.
- Focus on local businesses and entrepreneurial spirit.
- New shops, restaurants, and ambience are key.
- A mix of local, national, and international brands will cater to diverse tastes.



CONCESSIONS OPPORTUNITIES UPDATE



Concessions Opportunities



Information Session



Queens Taste



LGBT Network
LBE Networking



JFK Redevelopment
Expo



Queens Expo

OPPORTUNITIES AT JFK T5



- Terminal Refresh
 - Architecture, engineering, design and construction
 - Art
- Concessions Refresh
 - Architecture, engineering, design and construction
 - Goods and services
 - Art
- Launch Pad (microbusiness incubator)
- Activations
 - Performing artists
 - Décor and exhibits

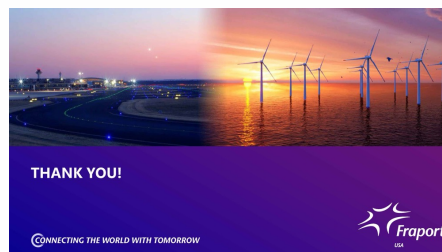
Upcoming events:

- Southeast Queens Mobile Office Hours
- MWBE/LBE Meet the Prime Event
- Call to Artists



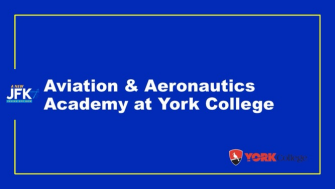
Connect with us!

JFKT5Refresh@Fraport-USA.com



Community Development Initiatives Updates





Year 1 Demographic Data (Fall 2023, Spring 2024, Summer 2024)



Total Participants		840
Tier 1	641	76.30%
Tier 2	145	17.30%
Other	54	6.40%
Total	840	100.00%

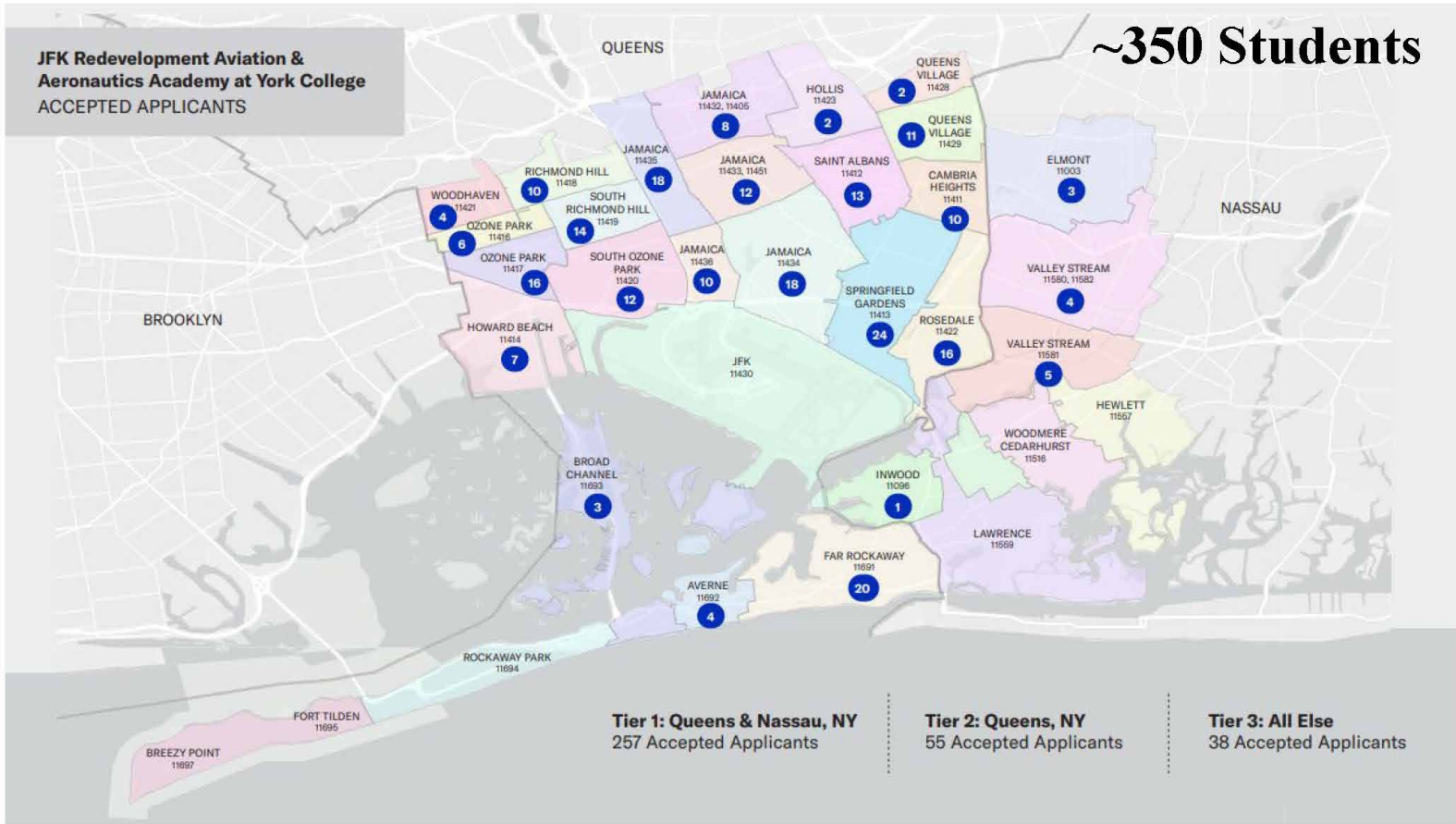
Breakdown All Participants		
Male	472	56.2%
Female	367	43.7%
X	1	0.1%
Total	840	100%

Breakdown Tier 1 + Tier 2 Participants		
Male	429	55.8%
Female	339	44.1%
X	1	0.1%
Total	769	100.00%

Ethnicity Breakdown of All Participants		
American Indian/Alaska Native	12	1.5%
Asian	155	18.8%
Black/African-American	351	42.5%
Hispanic/Latino(a)	135	16.4%
N/A	8	1.0%
Native Hawaiian/Pacific Islander	7	.8%
Other	136	16.5%
White (Non-Hispanic)	21	2.5%
Total	825	100.00%

Tier 1 + Tier 2 Ethnicity Breakdown		
American Indian/Alaska Native	12	1.6%
Asian	135	17.6%
Black/African-American	329	42.8%
Hispanic/Latino(a)	125	16.3%
N/A	7	.9%
Native Hawaiian/Pacific Islander	7	.9%
Other	134	17.4%
White (Non-Hispanic)	20	2.6%
Total	769	100.00%

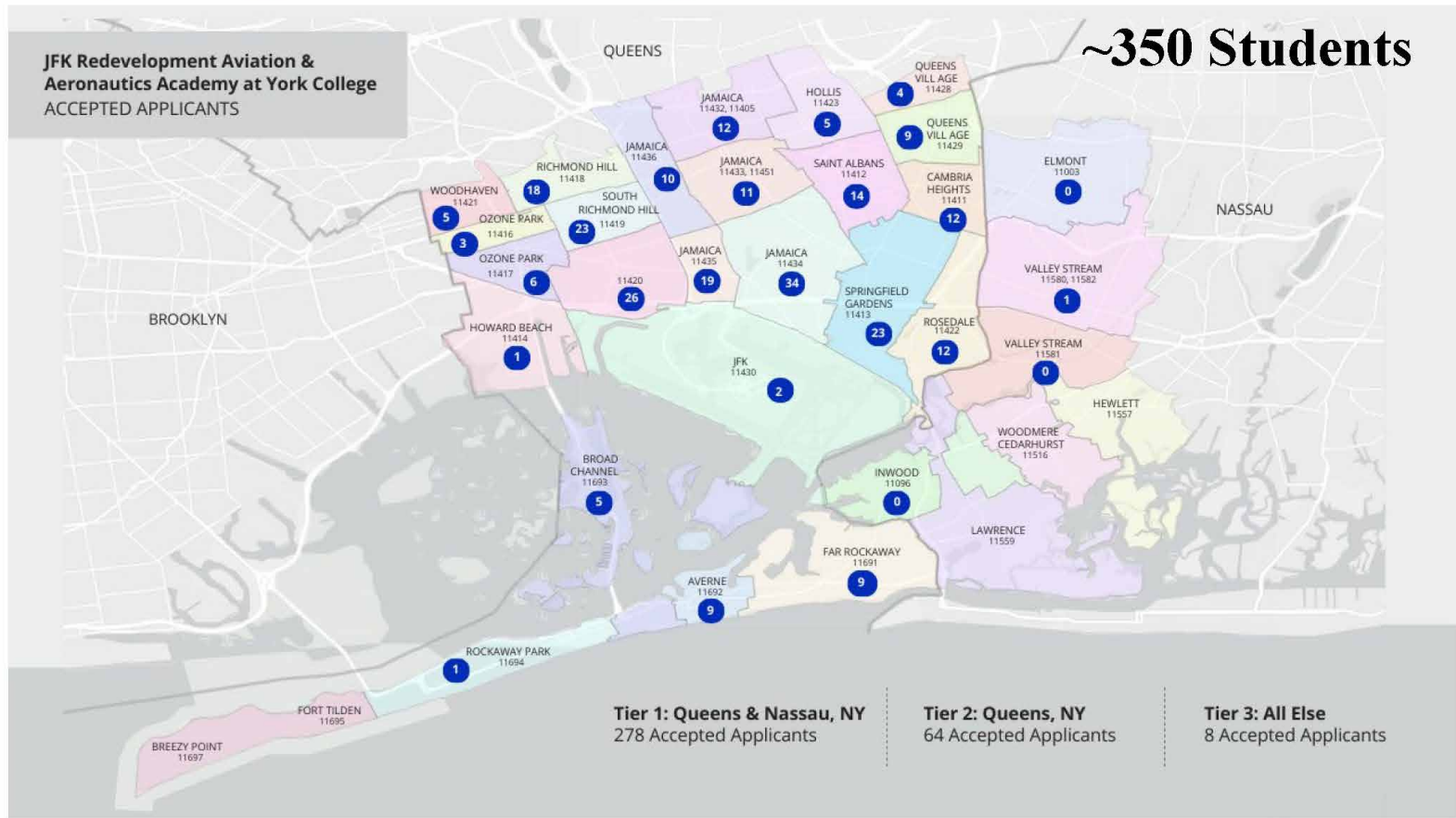
Fall 2023 Geographic Breakdown



Fall 2023: Snapshot



Spring 2024 Geographic Breakdown



Spring 2024: Snapshot



Summer 2024 Session Details



**125 Students (50 High School and 75 Middle School)
Full Day Program (Mon-Fri, 9 am – 3 pm)**

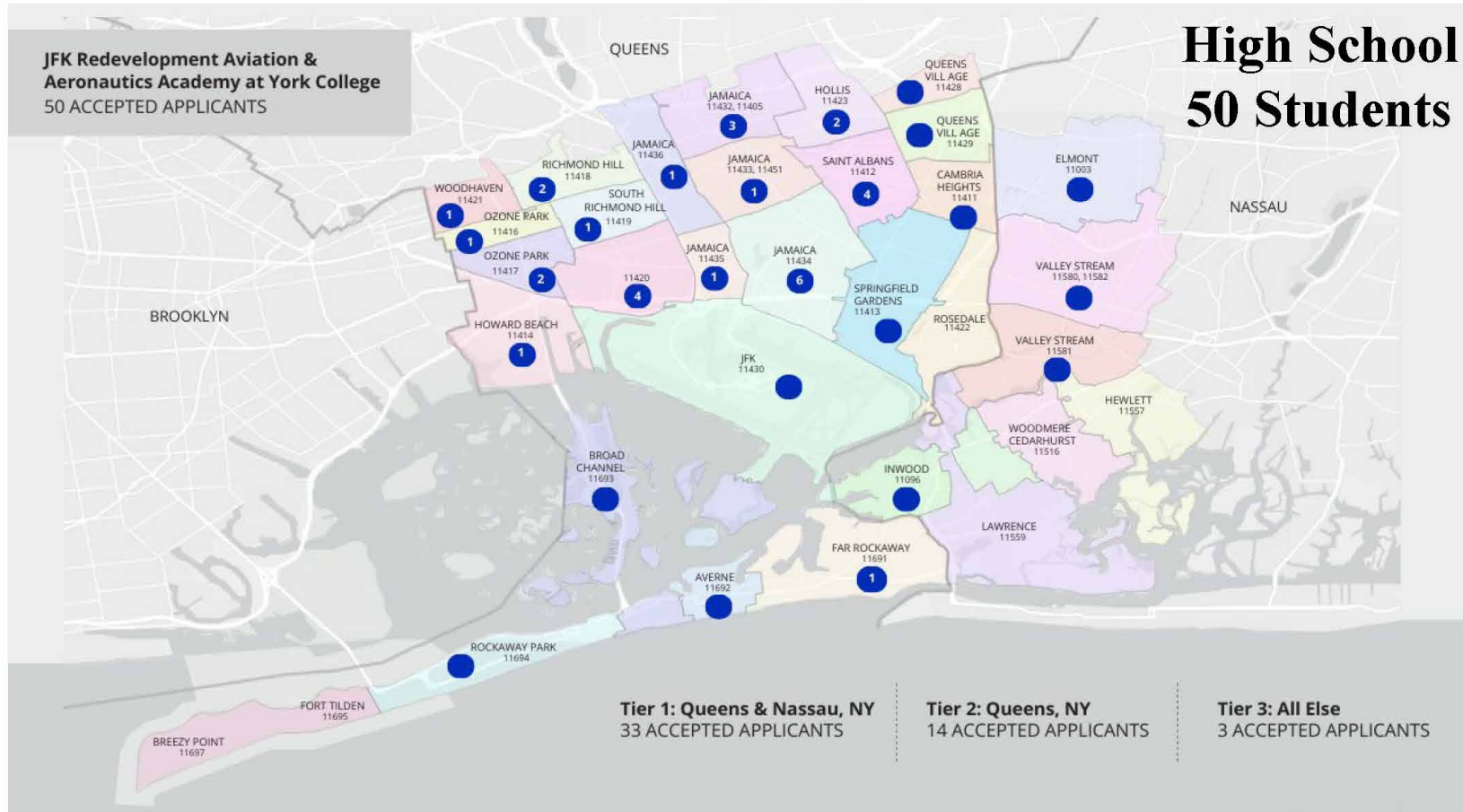
- High School: July 1 - August 9
 - College credit and stipend available.
- Middle School: July 15 - August 9

Incl. Field Trips to JFK, LGA, Cradle of Aviation Museum

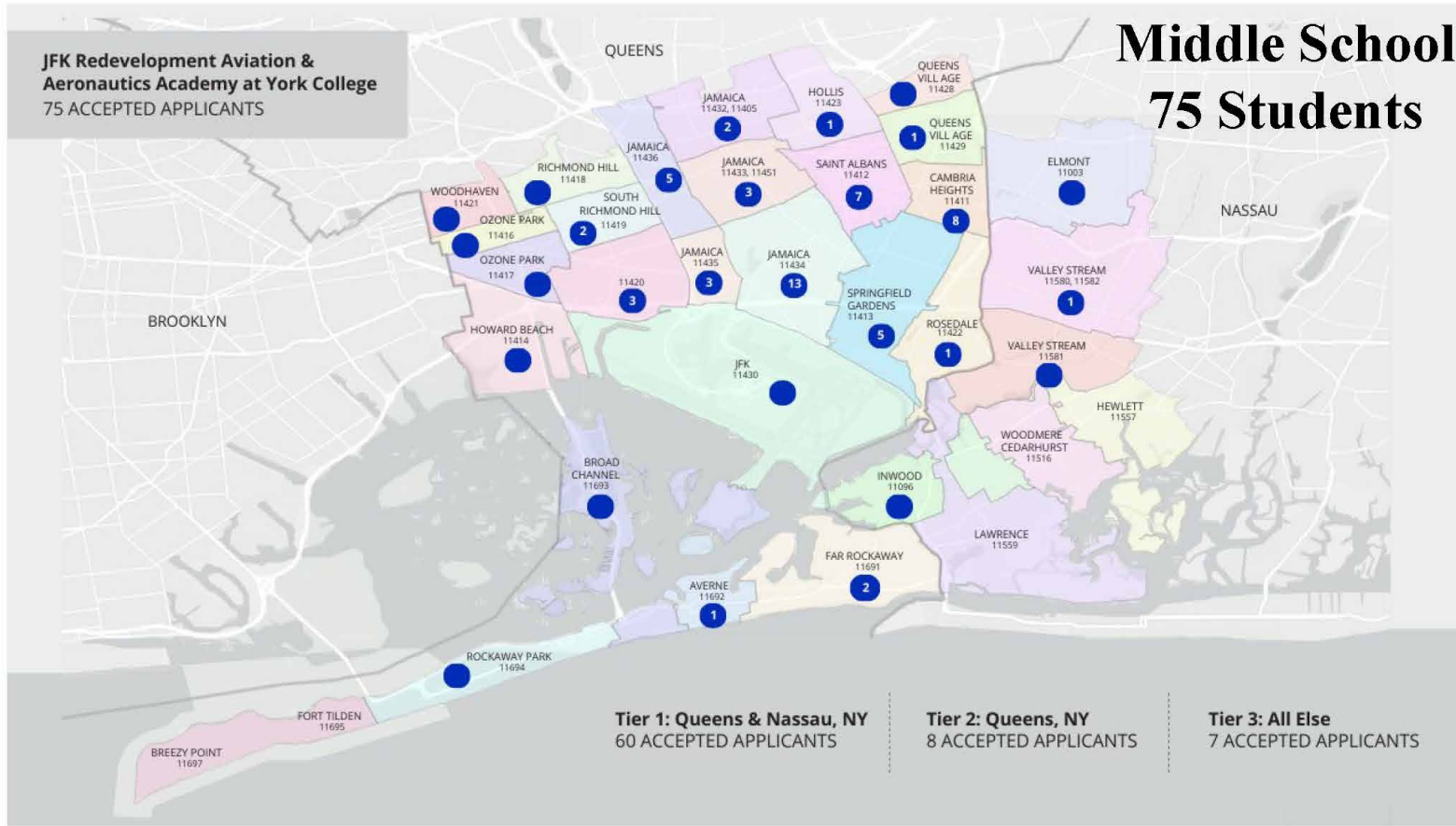
Summer 2024 Geographic Breakdown

JFK Redevelopment Aviation & Aeronautics Academy at York College
 50 ACCEPTED APPLICANTS

High School 50 Students



Summer 2024 Geographic Breakdown



Summer 2024 Snapshot



Fall 2024

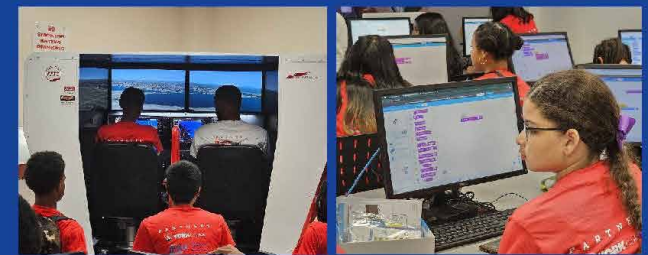
Dates: October 19, October 26, November 9, November 16
(No classes on November 2)
Saturdays only, 9:00 AM - 3:00 PM

Applications are now open, until
September 20 or until we reach capacity
(We are near capacity. Apply tonight!)



<https://www.york.cuny.edu/aviation-and-aeronautics-academy>

AVIATION & AERONAUTICS ACADEMY



Become an A.A.A. Scholar!

The JFK Redevelopment Aviation and Aeronautics Academy at CUNY York College (JFKR AAA) aims to expose local youth in grades 1-12 to science, technology, engineering, and math concepts related to aviation, aeronautics, and airport management, as well as to introduce them to leadership and career opportunities in the industry.

Now in its second year, the program continues to grow and offer students valuable experiences in aviation and STEM. Classes will be offered three times a year (Fall, Spring, and Summer). Fall and Spring K1-12 sessions will be on four Saturdays (9am to 3pm). Four and six-week-long Summer classes will be Monday-Friday (9am to 3pm) for grades 6-12.

A JFKR COMMUNITY DEVELOPMENT INITIATIVE

Dates of Fall 2024 program:
Saturdays (9am - 3pm)
10/19, 10/26, 11/9, 11/16

Registration for the Fall 2024 Session:
is open from September 6 - September 20 or
until we reach capacity.

For More Information, please contact
the JFK Redevelopment Community Information Center at
(718) 244-3834 or JFKRedevelopment@panynj.gov

To apply scan the QR code and visit the York College website:
<https://www.york.cuny.edu/aviation/aviation-and-aeronautics-academy>



CAO Rockaway Career Center

Andrew Campbell – Council for Airport Opportunity (CAO)
Verdia Noel – Council For Airport Opportunity (CAO)



April-August 2024 Highlights

109 Individuals Placed at JFK Airport

1,144 Career Assessment


55 Queens Residents Placed at JFK Airport

920 Candidates Referred

CAO Community Outreach

16 Community Information Sessions 

3 Job Fairs Hosted 

5 Customer Service & Financial Literacy Training Cohorts 

18 Job Fairs Attended 

Rockaway Career Center Dashboard

<u>KPI</u>	<u>2020- 2023</u>	<u>Jan.-August 2024</u>	<u>Total</u>
Customers Served	7881	2000	9881
Unique Referrals	6107	1905	8012
JFK Airport Placements	1160	208	1368
Queens Residents Placements	584	105	689
Tier 1 Placements	504	93	597

Current Employment Opportunities:

- Passenger Service Agents
- Flight Attendants
- Security Supervisor
- General Manager Retail
- Warehouse Office Agents
- Ramp Agents
- Hospitality
- Food Service
- Drivers and Dispatchers
- Security Officers

SUCCESS STORIES

Tier 1



Austin Diggs
Restaurant
Associates
Supervisor

Tier 1



Alloue Krahboue
UNIFI Aviation
Security Agent

Tier 1



Abierto Mitton
SSP America
Food Service
Worker



Yesenia Perez
Endeavor Air
Flight Attendant

The JFK Airport Institute of Concessions (IOC) is a dynamic 10-week in person training program that provides a gateway for local and dive businesses to gain the in-depth knowledge, understanding, practice, and application of key competencies that are essential to successfully operate a concession at any PANYNJ facility, with an initial focus at JFK Airport.

The JFK Redevelopment terminal developers and their concession managers have committed to carving out upcoming concessions opportunities to operate at JFK for graduates of IOC.

It's Your Time to Thrive!

Embark on a transformative journey designed to equip local and diverse Food & Beverage and Retail businesses with the essential skills and competencies needed to compete for and successfully operate a concession at the new, world class JFK Airport!

Successful retail businesses are strongly encouraged to apply.

JFK Airport Institute of Concessions

SCAN for More Information or to Apply for the Institute of Concessions

SCAN to Register for Upcoming Information Sessions

Why Apply?

The program is structured as a series of interactive sessions, workshops, and networking events, spanning 10 weeks.

Businesses will have the opportunity to:

- Learn from Aviation Industry Subject Matter Experts
- Get access to industry knowledge and resources
- Connect with ACDBE Concessionaires
- Participate in an Airport Concessions Tour

Contact Us: info.concessions@panynj.gov

American Airlines | JFK Millennium Partners | JFKIAT | DELTA | THE NEW TERMINAL ONE

Our Three-Pronged Approach



LEARN

The Institute will cover twelve (12) modules to fifteen (15) businesses. Mandatory courses are scheduled on Tuesdays and Thursdays from 2pm-5pm.

PRACTICE

The cohort will be divided into three (3) teams to submit a mock RFP that responds to either a Food & Beverage or Retail concession solicitation. Teams are also prepped to present to a live panel.

LIVE

Graduates of the Institute will be selected and paired up with terminal operators, developers and/or master concessionaires for continued support and guidance.

Businesses That Have Applied



RETAIL BUSINESSES

Specialty stores (e.g., electronics, fashion, souvenirs), Newsstands, convenience stores

FOOD BUSINESSES

Quick-service restaurants (QSR), Specialty food outlets (e.g., health-focused, ethnic cuisine, gourmet) and grab-and-go options

BEVERAGE BUSINESSES

Coffee shops and cafes, juice bars and craft beer and wine bars



Beautiful Amore Skincare
Amerrah Danielson
Retail



Coffe Project NYC
Pei Yin Cheong
Food & Beverage



Cooking With Corey
Corey Covington
Food & Beverage



Brooklyn Blend
Keishon Warren
Food & Beverage



Cuzin's Duzin
Todd Jones
Food & Beverage



Fusion East
Andrew Walcott
Food & Beverage

Cohort 1 Graduates



O' Rita's Roasters
Eric Busuttill
Food & Beverage



Romeo & Juliet Coffee
Carlos Morales
Food & Beverage



Halalbee's
Abdul Chowdhury
Food & Beverage



Rincón Salvadoreño
Elena Barcenes
Food & Beverage



Sayra's Wine Bar
Rashida Voorhies
Food & Beverage



Natural Blend
Deonne Wallace
Food & Beverage



Villa Russo
George Russo
Food & Beverage



Singas Pizza
Manish Chadha
Food & Beverage



Tsion Cafe
Beejhy Barhany
Food & Beverage

Cohort 2
Graduates



ESTOCK PHOTO
Luz Jimenez
Retail



OMSUTRA
Jyoti Jaiswal
Retail



PRIME KOSHER SPORTS
Allan Bailey
Food & Beverage



AUNT ETHEL'S POT PIES
Sasha Millstein
Food & Beverage



HARISSA'S HOT HUNNY
Walid Mrabet
Food & Beverage



Althea's Tropical Delights
Althea Casimir-Magloire
Food & Beverage



PUDDING PAN DESSERTS
Annette Davis
Food & Beverage



BLUE FIN BAR & GRILL
Hollis Barclay
Food & Beverage



HANNAH BANDANAH
Hannah Hunt
Retail



SANO NUTS & DRY FRUITS
Yogie Kanagaraajah
Food & Beverage



SOLO SCOOP CREAMERY
Dennine Dyer
Food & Beverage



THE KATI ROLL
Valerie Zandoll
Food & Beverage



SYLVIA'S RESTAURANT
Taniedra McFadden
Food & Beverage



Inaugural Cohort Graduation Reception
Queens Borough Hall
Fall 2023



Cohort 2 Graduation Reception
Queens Borough Hall
Spring 2024

Recent Press Spotlights



Spectrum NY1:
July 9, 2024



Queens Ledger
Sept. 4, 2024

General Information



Contact us via email

info.concessions@panynj.gov

Cohort 3 Timeline



APPLICATION OPENED

Tuesday, August 13th

APPLICATION CLOSED

Tuesday, September 10th

ACCEPTANCE NOTIFICATIONS

Monday, September 23rd

PROGRAM START

Tuesday, October 1st

PROGRAM GRADUATION

Thursday, December 12th

APPLICATIONS RECEIVED

- 98

INDUSTRY

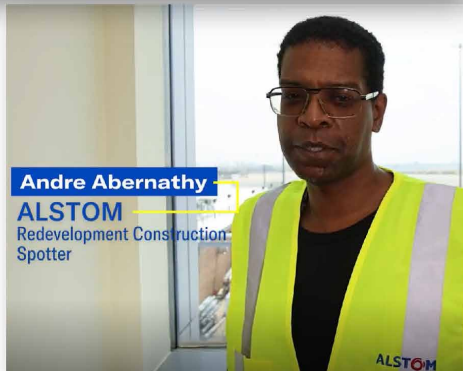
- Food & Beverage - 62
- Retail - 29
- Service - 7

LOCATION

- Tier 1 - 30
- Tier 2 - 11
- Tier 3 - 57

ACDBE CERTIFIED: 2

Office of Second Chance Employment Success Stories



[20240417 Office of Second Chance Employee Video v4.mp4](#)

Office of Second Chance Employment

2024 JFK Airport + PA Direct Placements

Employer	Positions	No. of Placements
ABM	Taxi Dispatchers	3
ABM	Traffic Attendants	3
Alstom	Air Train Agent	1
Dnata	Non-CDL Driver	1
OTG Management	Utility Worker	1
Sam Schwartz Ped. Traffic Management (SSPTMS)	Traffic Controller-Flagger	1
SSP Americas	Utility Worker/Dishwasher	1
SSP Americas	Cashier	1
PANYNJ	Temporary Passenger Information Agent	8
PANYNJ	Trackman	1
YTD Total Placements: 21*		

**Combined YTD Total Placements, including LGA & EWR: 44*

Office of Second Chance Employment Monthly Recruitment Events



JFK Summer Recruitment Event Thursday, June 20, 2024 — 11am–2pm

JFK Redevelopment Community Information Center, 144-33 Jamaica Avenue, Jamaica, NY 11435
Please bring your resume and wear professional attire. Thank you for your partnership!

Positions Available*

ASAK Solutions



ABM Industries



Alstom Transportation USA, Inc



ERMC Aviation



*Background check and security clearance *may be required.*



Office of Second Chance Employment JFK Recruitment Event Tuesday, September 17th, 2024 10am–12pm

Event Sign-Up:



JFK Redevelopment Community Information Center, 144-33 Jamaica Avenue, Jamaica, NY 11435

Please bring your resume, two forms of identification, and wear professional attire.
Thank you for your partnership!



ABM Industries Position Available*

Customer Service Representative (Lead position)

*Background check and security clearance *may be required.*

Employer will conduct one-on-one assessments with attendees.



Office of Second Chance Employment JFK Recruitment Event August 20th 11am–2pm [Register Here](#)

JFK Redevelopment Community Information Center, 144-33 Jamaica Avenue, Jamaica, NY 11435
Please bring your resume and wear professional attire. Thank you for your partnership!

Positions Available*

ASAK Solutions



ERMC Aviation



Alstom Transportation USA, Inc



Port Authority NY/NJ



*Background check and security clearance *may be required.*



JFK Redevelopment Aviation & Sustainability Mini Summer Camp

Monday, July 29th - Friday, August 2nd, 2024

32 Local Middle School Students

In partnership with:

- JFK General Manager's Office
- PA Office of Sustainability
- Southern Queens Parks Association
- CUNY Aviation Institute at York College
- JFK AirTrain (Alstom)
- Cradle of Aviation Museum

Topics covered: Climate change, Greenhouse effect, Carbon effect, Carbon cycle, Renewable energy, Conservation & resource management, Aviation sustainability and flight

Trips: AirTrain Operation Center, CUNY York College Aviation Flight Simulator, Cradle of Aviation Museum, & special airside tour of JFK Airport

With support from: The New Terminal One, Delta Air Lines, JFKIAT, JFK Millenium Partners, American Airlines, & URW



Upcoming Event

JFK Redevelopment Girls in Aviation Day 2024

- Opportunity for girls and young women (grades 1-12) to experience the exciting world of aviation!
- Be inspired by professional women in aviation, pilots, mechanics and more.
- Learn about exciting careers available to women in aviation, including aviators, aircraft maintenance technicians, pilots, ticket agents, flight crew, and more!
- **Date:** Saturday, October 5th, 2024
- **Time:** 9:00AM – 4:00PM
- **Location:** JFK Airport, PA Admin Bldg. 14
- **Scan QR code to register. Limited seats still available.**



PORT
AUTHORITY
NY NJ

Public Q&A



AIR LAND RAIL SEA

PORT
AUTHORITY
NY NJ

Community Engagement & Outreach



AIR LAND RAIL SEA

JFK Community Information Center

144-33 & 35 Jamaica Avenue | Jamaica, NY 11435

- In-person assistance is available Tuesdays, Wednesdays, and Thursdays, from 9am-5pm.
- Visit www.anewjfk.com to schedule an appointment with the MWBE Consultants, Contractors, and Terminal Developers.
- Information sessions, Hiring events, Educational programming, Certification workshops, Networking opportunities



Community Information Center Data

April 2024 – September 2024



JFKR Community Information Center

April 2024 – September 2024 Event Data



PANYNJ Certification

April 2024 – September 2024



JFK Redevelopment Youth Programs

April 2024 – September 2024 (Zip Code Breakdown)

# OF YOUTH PROGRAMS	1 PROGRAM JFK REDEVELOPMENT AVIATION & SUSTAINABILITY MINI SUMMER CAMP
# OF YOUTH PROGRAM ATTENDEES	32 STUDENTS
# OF STUDENTS TIER 1	28 STUDENTS
# OF STUDENTS TIER 2	4 STUDENTS
# OF CAREER DAYS	6 CAREER DAYS

L/M/WBE Business Utilization

April 2024 – September 2024

Food & Catering	Graphics & Printing	Locations
Portland Jerk, 11416	Party Moment, 11435	Roy Wilkins Recreation Center, 11434
Genesis, 11432	JFK Office Supermarket, Inc., 11434	
Chosen Cultures, 11434	U Printing, 11432	
M&R Concessions, 11430	L&M, Printing, 11580	
Bella Lulu's, 11435		

JFK REDEVELOPMENT OUTREACH MAY 2024 - SETPEMBER 2024 OUTREACH EVENTS ROADMAP

**MAY
2024**

- Empower Queens Job & Resource Fair
- JFK Rotary 5K Walk/Run
- CUNY York College Aviation Day
- Valley Stream Memorial Career Day
- Challenge Charter Aviation Day
- Congress Member Meeks Community Breakfast

**JUNE
2024**

- NYC Small Business Month EXPO
- QCOC Business EXPO
- P.S. 54 Career Day
- Dept. of Labor Community Job & Resource Fair
- GJDC JobsNYC Queens Employer Virtual Job Fair
- GJDC JobsNYC Queens Employer Job Fair

**JULY
2024**

- NYS ESD MWBE Opportunities Regional EXPO
- P.S. 112Q Career Fair
- Queens BP Queens Tech & Job Fair
- JFK ARFF Intern Day
- Teterboro Airport Intern Day
- Competitive Edge Conference
- 2024 Airport Community Golf Classic
- PANYNJ FAA JFK ATC Intern Day
- Crescent Consulting Workforce Opportunities Event
- Assembly Member Solages Elmont Family Day

**AUGUST
2024**

- AMAC Conference
- TWA Intern Day
- JFKRAAA Day at JFK Airport

**SEPTEMBER
2024**

- P.S. 54 Back to School Event
- Crescent Consulting x Senator Comrie Back to School Event

INTERNATIONAL AIRPORT



More on the way!
Please reach out if you would like for us to come to your next event or meeting!

Upcoming Event

JFK Redevelopment Watch & Learn Series

In Collaboration with The New York Metro Black Pilots Association

Purpose: To teach students and adults the history of aviation, aerospace, along with accomplishments that have impacted the direction of science, technology, engineering and mathematics via the use of motion cinema pictures

- **Time:** 6PM
- **Location:** JFK Redevelopment Community Information Center
144-33 Jamaica Avenue, Jamaica, NY 11435
- **Upcoming Movies:**
 - Apollo: Mission to the Moon, September 20th
 - Disney Up, December 6th

A NEW JFK | JFK REDEVELOPMENT PROGRAM
WATCH & LEARN SERIES

APOLLO
MISSIONS TO THE MOON

WATCH & LEARN SERIES IN COLLABORATION WITH THE NEW YORK METRO BLACK PILOTS ASSOCIATION

SCAN ME

FREE EVENT FOR STUDENTS & TEACHERS

JFK Redevelopment Community Information Center
144-33 Jamaica Avenue
Jamaica, NY 11435

September 20, 2024 | 6:00PM - 9:00PM

718.244.3834

JFKRedevelopment@panynj.gov

TO REGISTER YOUR CHILD, USE LINK BELOW OR SCAN QR CODE
[HTTP://TINYURL.COM/2024JFK](http://tinyurl.com/2024JFK)

FREE PRIZES, POPCORN, SNACKS, COTTON CANDY & MORE.

DISNEY UP
Disney PIXAR

WATCH & LEARN SERIES IN COLLABORATION WITH THE NEW YORK METRO BLACK PILOTS ASSOCIATION

SCAN ME

FREE FAMILY EVENT OPEN TO THE PUBLIC

JFK Redevelopment Community Information Center
144-33 Jamaica Avenue
Jamaica, NY 11435

December 6, 2024 | 6:00PM - 9:00PM

718.244.3834

JFKRedevelopment@panynj.gov

TO REGISTER YOUR CHILD, USE LINK BELOW OR SCAN QR CODE
[HTTP://TINYURL.COM/JFKSWATCH&LEARN](http://tinyurl.com/JFKSWATCH&LEARN)

FREE PRIZES, POPCORN, SNACKS, COTTON CANDY & MORE.

PORT AUTHORITY NY NJ
AIR LAND RAIL SEA

The JFK Redevelopment Program's Watch & Learn is a new series hosted by the Community Outreach team along with The New York Metro Black Pilots of America Association to teach grade school children the history of aviation, aerospace, technology, engineering and mathematics via the use of motion pictures.

Upcoming Student Opportunities

PANYNJ Internship & Fellowship Program

The Port Authority offers premier training and internship programs in a variety of areas for both undergraduate and graduate students. This is a great time to join the Port Authority and contribute to history-making projects that will advance the people, marketplace and communities of the world's leading transportation and commerce region. You'll be part of an organization that values integrity, diversity, and a culture of partnership and cooperation.

- Leadership Fellow Program
- Engineering & Associates Program
- Operations Fellow Program
- Internship Program

Link for more information and how to apply.

https://www.jointheportauthority.com/search/college-programs/jobs/?jobcat=1&per_page=10

