

JFK Redevelopment Program

Community Advisory Council Meeting

12.18.2020



AIR LAND RAIL SEA

Agenda

- **Welcome: Congressman Gregory W. Meeks & Queens Borough President Donovan Richards**
- **Program Update**
- **Local Business & MWBE Engagement**
- **Community Outreach**
- **Community Development Initiatives**
- **Terminal Developer Updates**
 - **The New Terminal One**
 - **American Airlines/T8**
- **Q&A**

OPENING HIGHLIGHTS FROM:

JFK Redevelopment Community Advisory Council Facilitator

Dr. Stacie NC Grant

JFK Redevelopment Community Advisory Council Co-Chairs

Congressman Gregory Meeks

Queens Borough President Donovan Richards

Director, Government & Community Relations Aviation Redevelopment - NY

Hersh K. Parekh

Senior External Relations Client Manager, Government & Community Relations

Stacey Gilbert

Dr. Grant welcomed everyone and shared regards from Congressman Meeks who due to his engagement in the votes on the floor of the House of Representatives, was unable to join as he continues to advocate for the funding necessary for this project and all the pressing needs in our state.

BP Richards addressed the Council in his new capacity as Borough President and he plans to maximize opportunities for our community. Ready to get to work with “big heels to fill” following DA Melinda Katz and former BP Sharon Lee he understands the importance of the success of this project. Living in the flight path of JFK as a resident in Rosedale he is keenly aware of the importance of the airport being a good neighbor. J & P Runway being at the airport is a move in the right direction. Along with Congressman Meeks, he will hold the PA accountable to make sure our community benefits from the job opportunities, the MWBE opportunities and as much as possible an environmentally sound airport in our community. With a Degree in Aviation Management, he will be exercising this expertise here and looking forward to hearing from and working with the community.

Hersh Parekh congratulated and welcomed our new Advisory Council Co-Chair BP Richards and recognized our other Elected Official present: Assembly Members Hyndman & Vanel. Additionally, a note of congratulatory gratitude was given to Selvena Brooks-Powers and Nantasha Williams for all their work in their former roles as Community Outreach Managers and best wishes in their new roles.

Program Update - The project is still in status quo with the large terminal projects on pause. Impacts of COVID-19 have not gone away. Hopefully 2021 will be a better year. The New Terminal One Team and Millennium Partners Working to get projects back on track. The PA Board of Commissioners adopted an Austerity Budget for 2021 and requested from the Federal Government a one time relief funding assistance of 3 Billion Dollars. Great appreciation goes to Congressman Meeks for fighting for that relief for NYC, NYS and the PA and sister agencies. The budget was adopted in the absence of the Federal Relief with an overall reduction of 15% from the prior year. It reduced the capital budget spend by 1.2 Billion on top of the 1 Billion dollar underspend totaling 2.2 Billion. Projected 3 Billion dollar loss. Thus, the PA is In need of federal funding and hopefully it will come under the incoming administration.

Stacey Gilbert & Hersh Parekh shared information on Local Business & M/WBE Engagement, Community Outreach and and Community Development Initiatives as summarized in the following slides.

J&P Runway Café Ribbon Cutting



On November 30, PA Executive Director Rick Cotton, Chief Diversity & Inclusion Officer Michael Messiah, and JFK Airport General Manager Charles Everett were joined by Congressman Gregory Meeks, Queens Borough President Donovan Richards, Senator Leroy Comrie, Assembly Members Alicia Hyndman, Clyde Vanel, and Khaleel Anderson, a representative from the office of Senator James Sanders, Jr., and members of the JFK Redevelopment Community Advisory Council to celebrate the opening of the new airport employee cafeteria - J&P Runway Café. It is a local minority and woman-owned business enterprise (M/WBE), led by successful local Queens restaurateurs Annette Runcie, owner of Pa-Nash Restaurant in Rosedale, and Michael Duncan, owner of Jamaica Breeze Restaurant in Laurelton.

6



M/WBE Capacity Building

Since October 2020, the JFK Redevelopment Program has advanced their M/WBE capacity building efforts through:



- Hosting various M/WBE events in collaboration with PANYNJ Procurement Team, and LGA & EWR T1 Redevelopment Outreach Teams
- Hosting Monthly Certification 101 Webinars and Bi-Monthly Virtual M/W/S/DBE Certification Assistance Sessions
- **Upcoming Events include:**
 - Monthly Roundtable Series, which will continue through December and into the new year
 - Virtual Monthly M/W/S/DBE Certification Workshops
 - For more details on events, please visit www.ANewJFK.com

7










New York State M/WBE Forum

Business Development

11:30 a.m. - 12:30 p.m. **Airports: LaGuardia and JFK** LIVE

Redeveloping airports is one of Governor Cuomo's top infrastructure priorities for NYS. At LaGuardia Airport, an \$8 billion redevelopment program is underway. A Whole New LGA will include new state-of-the-art terminals, parking garages, new roadway and city networks. The LGA Redevelopment Program will modernize and transform the nation's premier domestic airport into a world-class transportation hub.

The Governor's JFK Vision Plan sets in motion a \$13 billion program for a unified and interconnected airport system with best-in-class passenger amenities and centralized ground transportation options. Both the LGA and JFK Redevelopment programs include a 30 percent M/WBE utilization goal. This intensive session provides you with a snapshot of these projects and will include current and upcoming opportunities.

Remarks	Moderator	Panelists
 Michael Massiah Chief Diversity and Inclusion Officer The Port Authority of New York and New Jersey	 Herb Parekh Director of Government & Community Relations Airports Redevelopment New York The Port Authority of New York & New Jersey	 Suzette Bather-Taylor Senior Project Director Strategic Capital Initiatives Office of Diversity & Inclusion The Port Authority of New York & New Jersey  Dr. Gerrard P. Bushell Executive Chair of The New Terminal One Development Project at JFK International Airport Chief of Capital Asset Group CAEG Holdings  George Guillaume Delta Air Lines Senior Director Terminal C Program  Follesade (Sadie) A. Olanipekun-Lewis Regional Director Government and Airport Affairs American Airlines Terminal B  William Thompson, Jr. Chief Administrative Officer Robert Williams, Stone & Co. LLC (2016)

#NYSMWB 25

- On December 3, the Port Authority and Terminal Developer Teams from both JFK and LGA participated on a panel about the Airport Redevelopment Programs at LGA and JFK during the 10th Annual NYS MWBE Forum.
- Panelists included representatives from PANYNJ, the New Terminal One at JFK, American Airlines, JFK Millenium Partners, and Delta Air Lines.
- Panelists provided project updates, shared upcoming opportunities, and discussed strategies for achieving (and exceeding) the 30% M/WBE Utilization Goal.

Port Authority Early Works

Recent Local Engagement—Q4 2020

The Port Authority through its prime consultants (HNTB/Mott MacDonald/STV) continues to strive to exceed the 30% MWBE goals across the JFKR Program, including in Professional Services. Additionally, there has been a special focus on engaging local participation through direct outreach within the targeted zip codes. To date the following actions have taken place:

- Sourced PA database of certified M/WBE firms to identify qualified local firms with capabilities to match scope of services for upcoming opportunities;
- Thirteen local African-American and Hispanic firms within Tier 1 zip codes were identified;
- **Three local, Tier 1, African-American and/or Hispanic firms are negotiating an agreement with TONAB, an MBE firm, to provide professional design services to support existing architectural team in Q1 2021**
 - PA's A&E Principals Academy is a 6-month capacity building program to prepare A&E firms to do business with the Port Authority;
 - There have been two Cohorts to date since the program commencement in 2019 with a total of (24) participants; four of which are currently engaged in the PA's Bldg. 111 Project;
 - Out of 24 participants: One - Tier 1 firm; Two-Tier 2 firms; and Seven-Tier 3 firms participated in the Academy.

✓ **Additionally, in Q4 2020 On Point HVAC Corp. a local – Tier 1 (Ozone Park), MBE Mechanical Services Contractor was awarded @ \$3.5M to support on the KIAC Expansion – Chiller Plant replacement project.**

Business Development Initiative Update - Local, M/WBE Boot Camp Initiative

Short-Term Capacity Building Program Update

Since the last Community Advisory Council meeting, the JFK Redevelopment team has meeting to develop a short-term capacity building boot camp that will help to create a pipeline to the early work opportunities. There will be several cohorts offered, centered around specific early work opportunities with the first cohort set to begin in Q2 2021 (tentatively).

The JFK Redevelopment is exploring the potential to partner with local capacity building programs in the community to facilitate select trainings. If you, or someone you know, is interested, please submit capacity statement to

jfkredemption@panynj.gov.

Virtual Webinars

Career/Workforce Development and Business Development

- 14 webinars focused on Career/Workforce Development, including partnerships with: Council for Airport Opportunity, The Queens Public Library, and the New York State Workers Compensation Board
- 3 webinars focused on Business Development, including collaboration with TruFund and Francilia Wilkins, CEO of R.F. Wilkins Consultants



Community Outreach Manager Update

- The Port Authority has started conducting interviews for a new Community Outreach Manager.
- Advisory Council Members were notified of the open position and sent the link to the job posting to refer candidates on November 18, 2020.
- This person will be responsible for managing community outreach for the JFK Redevelopment Program.
- If you wish to refer a candidate or apply for consideration, please email us at JFKRedevelopment@panynj.gov for the job posting.



Port Authority Solar Initiatives

- The Port Authority currently has four solar projects under development: JFK, EWR ConRAC, LGA Terminal B Parking Garage, and PATH Warehouse.
- Important contributor to achieving 35% reduction in GHG emissions by 2025, consistent with Paris Climate Accords.



JFK Solar Project

- On Thursday, December 17, the PA Board of Commissioners authorized the development, construction, and operation of a solar power canopy storage system at JFK Airport, Long Term Parking Lot 9. It will be the largest on-site solar plus storage project in NYS.
- SunPower Corporation and Goldman Sachs Renewable Power were announced as the development team in Q4 2019.
- The project will reduce greenhouse gas emissions by approximately 5,300 metric tons annually
- Solar-generated electricity will also serve small businesses and LMI residents in the surrounding communities, who will be eligible to receive credits on their utility bills through the NYS Community Solar Program.



JFK Solar Project

1. Power for the Airport:

- 6.2 MW provided to AirTrain JFK
- 2.5 MW battery storage provides resilience to AirTrain JFK

2. Community Solar:

- 6.1 MW sent to local power grid
- 2.5-5 MW power available to LMI residents in surrounding communities, eligible for credits that lower customer bills



JFK Solar Project

- Target commercial close: Q1 2021
- Target construction start: Mid-2021; completion Q4 2022
- Consumer information on the Community Solar program to be distributed in communities surrounding JFK in early 2022
- Community Solar program sign-up for surrounding communities to begin mid-2022

Contact Us

Virtual Office Hours:
Monday to Friday – 9AM - 5PM

JFK Redevelopment Information Center
144-33 & 35 Jamaica Avenue | Jamaica, NY
(718) 244-3834
JFKRedevelopment@panynj.gov
www.ANewJFK.com



BREAKING NEWS
In partnership with the Governor's Office & the NY Power Authority, The Port Authority announced the first and largest Public Electric Vehicle Charging Station in the Northeast now available at JFK Cell Phone Parking Lot with 10 Fast Charging Ports

Virtual Partner Hours

Organization	Days	Times
M/WBE Compliance Consultants Support	Every Monday	12PM-4PM
The New Terminal One	Monday-Friday	By appointment, new online booking system
JFK Millennium Partners	1 st and 3 rd Wednesday	1PM-5PM
American Airlines	1 st Fridays	11AM-1PM
Council for Airport Opportunity (CAO)	3 rd Thursdays	3PM-6PM

In addition to Partner Hours, additional office hours and appointments can be made with Terminal Developers



The New Terminal One at JFK: Updates

Revised timeline due to COVID-19 and macroeconomic challenges with construction projected to commence in 2021

1 Contractor Procurement

- The New Terminal One at JFK ("NTO") remains on pause due to COVID-related impacts to international air travel
- NTO has issued a Request for Qualifications to select a general contractor
- Selected firm(s) will advance schedule, deliver project on budget and drive our local, workforce and MWBE objectives

2 Recent Activity

- October 15: Opening Keynote at Black Business Owners Forum
- October 30: Named "2020 Development Team of the Year" at the National Association of Minority Contractors 51st Annual Conference
- December 2-4: Panel participation and virtual exhibit booth presence at 2020 New York State M/WBE Forum



Continued Community Outreach:

3 Monthly Information Sessions

- **Past:** Oct 13, Nov 10, Dec 15
- **Upcoming:**
Jan 12: Marketing Your Business
Feb 9: Understanding Insurance

4 Virtual Office Hours

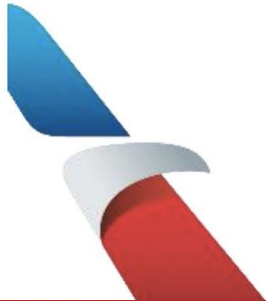
- Monday – Friday (9am - 5pm)
- To register, visit us at anewjfk.com



Terminal 8 JFK Redevelopment Program Quarterly Meeting - JFK Community Advisory Committee

AGENDA

- Program Update & Budget
- Outreach
- Report on Opportunities for MWBEs, LBEs
- Success Story
- Overcoming MWBE & LBE Challenges
- Workforce
- Looking Ahead: Q1 2021 Opportunities Outlook

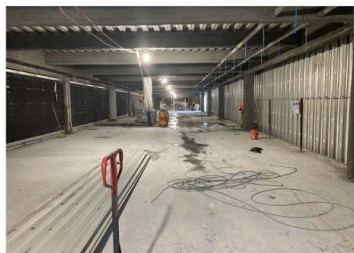


PROGRAM SCHEDULE - UPDATE

(AS OF NOVEMBER 30, 2020)



- 30' Bump-Out: Structure, Deck & Enclosure Complete
- Baggage Handling System: Phase 1 in Progress
- Level 4 Office Works in Progress
- AA/BA Joint Lounge: Design Development Complete
- One JFK Vision – A&E Selected



JFK TERMINAL 8



PROGRAM BUDGET

ITEM	BREAKDOWN	FUNDING
Terminal 8:	Construction (Holt)	\$165,115,417
	BHS (Siemens)	\$85,302,720
	BHS Right of Way	\$5,000,000
Joint Lounge/Check-In:		\$63,648,236
One JFK Vision (\$25M):	Public Restrooms	\$25,000,000
	CCTV	
	Signage	
	Other	
TOTAL		\$344,066,373

M/W/LBE PARTICIPATION

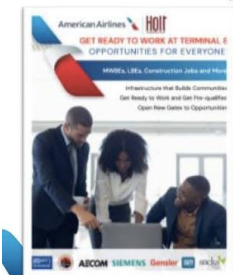
A \$344 Million Project with 30 Percent + Subcontracting Opportunities

- 20 percent MBE Participation Goal = \$68.8 Million
- 10 percent WBE Participation Goal = \$34.4 Million
- Local Business Enterprise in Targeted Zip Codes

OUTREACH – DECEMBER 8TH EVENT OVERVIEW



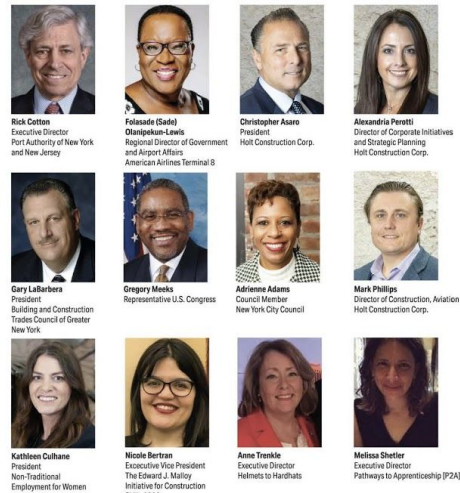
1186 Registered | 730 Attended



www.diversityagenda.com/holt/terminal-8-publication/

www.player.vimeo.com/video/488389660

JFK TERMINAL 8



www.diversityagenda.com/terminal8/

30

OUTREACH - INITIATIVES

American Airlines continues to organize and host regular outreach event and seminars to inform the community of project opportunities.

There have been 39 outreach events since January 2020 at which ~2,000 LBE were invited.

Objective of Outreach Events

- Inform them of current status of project
- Prequalify Vendors to be placed on bidders list
- Assist Vendors in navigating Potential Bidding Opportunities
- Assist firms seeking Port Authority Certification if necessary

Frequency of Events – (Due to COVID 19, Events have been virtual)

- Virtual Office Hours (Monthly)
- Virtual Outreach Events (Bi-Weekly)
- Round Table Discussions-(Monthly)
- Project Specific One on One Meetings with Vendors (Average 2 per Week)
- December 8th Special Event (American Airlines/Building Trades/Port Authority)

M/W/LBE PARTICIPATION – ENGAGEMENT

(As of November 30, 2020)

TIERS	Q3 2020	Awards & Pending Awards
		Q4 2020 (to date)
LBE Tier 1 - Target Zip Codes	2	6
LBE Tier 2 - Borough of Queens	5	9
Tier 3 - Remaining Boroughs	7	11
Tier 4 - Port District	15	31
Tier 5 - Outside Port District	6	22

M/W/LBE PARTICIPATION – LOCAL WINS TIER 1 & 2

(As of November 30, 2020)

Tier 1 (Target Zip Codes)

- Jamaica Blue Print (WBE): Drawing Reproduction
- Jetway Security (MBE)
- Royal Waste
- RCGA (MBE with M/WBE subs): One JFK Vision A&E
- Deutscher & Daughter (WBE): Doors & Hardware
- Current Fire Protection

Neighborhood

- Jamaica, NY
- Valley Stream, NY
- Jamaica, NY
- Jamaica, NY
- Jamaica, NY
- Cambria Heights, NY

Contract Value

- \$30,309+
- \$106,656+
- \$10,000+
- \$360,534 (pending award)
- \$263,119 (pending award)
- \$625,000 (pending award)

Tier 2 (Borough of Queens)

- Stafford Group (MBE): Project Management
- Elli NY Design (MBE): Millwork
- Elite Demolition: Demolition
- Alt Air (MBE): HVAC
- Carter, Milchman & Frank, Inc. (WBE): Material Supply
- US Aerial (MBE): Equipment Rental
- Bay Crane: Hoisting
- Unity Electric (with M/WBE subs): Electrical
- Fine Painting (MBE): Painting & Acoustical Panels

- Flushing, NY
- Ridgewood, NY
- Maspeth, NY
- Long Island City, NY
- Long Island City, NY
- Long Island City, NY
- Long Island City, NY
- Flushing, NY
- Ridgewood, NY

- \$150,000+
- \$105,000
- \$375,000
- \$319,000+
- \$13,470
- \$20,000
- \$15,000
- \$1,861,210
- \$115,500 (pending award)

M/W/LBE PARTICIPATION – MBE AWARDS & PENDING

(AS OF NOVEMBER 30, 2020)

20% MBE Participation Goal = \$68.8 Million

- Awarded Contracts: \$104,497,971
 - \$12,231,675 (Construction Build)
 - \$ 4,332,695 (Design)

 - **TOTAL \$16,564,370** (15.9% of all awarded contracts)

M/W/LBE PARTICIPATION – WBE AWARDS & PENDING

(As of November 30, 2020)

10% WBE Participation Goal = \$34.4 Million

- Awarded Contracts: \$104,497,971
 - \$16,325,562 (Construction Build)
 - \$ 7,651,399 (Design)

 - **TOTAL \$23,976,961** (22.9% of all awarded contracts)

M/W/LBE ENGAGEMENT- OVERCOMING CHALLENGES

- Insurance
 - Auto policy issued outside of OCIP to cover Holt and subs
- Capacity
- Vendor pre-qualification
- Airport security protocols
 - Access for non-badged personnel/vendors
 - CBP bonding
- Project Labor Agreement
 - Executed Dec 11th, 2020
 - Will open up additional opportunities to local firms and tradespeople



PROJECT LABOR AGREEMENT (PLA)

- The Project Labor Agreement allows for smaller, non-union, firms to participate in the Terminal 8 Project.
- Non-union work are capped at approximately five percent of the anticipated prime contract value, excluding any change orders.
- This non-union opportunities are applied equitably across all trades.
-
- **First PLA Outreach event - January 15, 2021 @ 12:00 pm**

Terminal 8 Team is committed to maximizing the positive economic impact of non-union local community contractors by offering smaller bid packages to increase the number of contracts to MWBE's

WORKFORCE PARTICIPATION – MINORITY & FEMALE

Participation as of 11/30/2020

HOURS

Total Skilled
35,048

Total Laborer
6,549

HOURS

- Minority Skilled: 10,955 (31.3%)
- Minority Laborer: 5,607 (85.6%)
- Female Skilled: 441 (1.3%)
- Female Laborers: 28 (0.4%)

Partnerships to increase female and minority skilled participation

- Nontraditional Employment for Women
- Helmets to Hardhats
- Pathway to Apprenticeship
- Edward J Malloy Construction Skills

WORKFORCE PARTICIPATION – LOCAL TRADE/LABOR

Trade/Labor – All Contractors*	Tier	# Employees/ Local Q3	Percentage of Trade/Labor Workforce Q3 2020	# Employees/ Local Q4	Current Percentage of Trade/Labor Workforce Q4 2020
Target Zip Codes	1	14	15%	32	14%
Borough of Queens	2	6	6%	16	7%
Remaining Boroughs	3	13	14%	30	13%
PANYNJ Port District	4	62	65%	144	62%
Undetermined		0	0%	9	4%
Total Trade/Labor Workforce		95		231	

*Trade/Labor numbers are based on headcount by Tier. Team is working on compiling the data based on hours worked by personnel in each Tier beginning in 2021.

Note: As of August 31, 2020, the combined percentage among Tier 1 & 2 was 12.9% (previously reported as 0% in error)

Ongoing collaboration with Crescent to improve workforce objective.

OPEN GATES TO CONTRACTS, JOBS AND INFORMATION

John F. Kennedy International Airport is getting ready to welcome a new American Airlines Terminal 8. The project will improve the overall customer experience, with a total of 70,400 square feet of added space including 33,000 square feet of public space. Another 57,500 square feet of existing space will be refurbished.

To build the new Terminal 8, American Airlines and Holt Construction are committed to engaging, preparing and hiring certified Minority and Women Owned Business Enterprises (MWBs), Local Business Enterprise (LBEs) and Construction Workers for the project.

Our programs are strategically designed for certified firms and the local community workforce who want to get to work on the JFK Terminal 8 project. Each group has its own "gate" designed to provide the educational tools and resources needed to work on this historic project.



Minority and Women Owned Business Enterprises (MWBs)

Enter



Local Business Enterprises (LBEs)

Enter



Construction Jobs

Enter

UPCOMING SCHEDULE OF EVENTS

JANUARY

Get Pre-Qualified: Your First Step to Getting a Contract
1:00 p.m. - 1:40 p.m. Friday, January 8, 2021

Webinars: This session will take you through, step by step, the complete list of the qualification process. You will have an opportunity to ask questions and determine which documents you have or might be missing. This is your first step to bidding on a contract.

How do I find the Right Project for My Company?
1:50 p.m. - 2:10 p.m. Friday, January 15, 2021

Webinars: You have to find the right opportunity for your company. Large firms evaluate whether they want to bid on a project or pass. This session will help you navigate the factors to consider so that you can bid on the right projects and increase your chance of winning a contract.

Getting Certified with PANYNJ and ESD: How to prepare your documents
1:50 p.m. - 1:40 p.m. Friday, January 22, 2021

Webinars: Not certified yet as an MWBE with either the Port Authority of New York and New Jersey or New York State? This session will include professionals from PANYNJ and ESD who will help you navigate the important steps to building your business.

MASPS: Creating Your Health and Safety Plan
1:00 p.m. - 1:30 p.m. Friday, January 29, 2021

Webinars: This very important session conducted by Holt's Safety Team will help you build and implement a site safety plan for your projects. Health and Safety Plans, commonly called HSPs, are an important part of your construction program and will enable you to manage projects better, control risk and inevitably increase your safety rating (SR&I) and ultimately reduce insurance rates.

Getting a Job in Construction
1:30 p.m. - 1:50 p.m. Friday, January 5, 2021

Webinars: How do you navigate the job recruitment process to enter the construction industry for a building trades position? This session will review how the recruitment process proceeds, what information you need to provide and how to best present yourself.

Find Opportunities in the Building Trades: Construction Skills 2000
1:30 p.m. - 2:30 p.m. Friday, January 26, 2021

Webinars: If you want to explore a position in the building trades, check out Construction Skills 2000 (CSK2000) to learn more about the technical assistance this organization can provide.

FEBRUARY

Preparing a Bid: What They Never Taught You in School
1:00 p.m. - 1:30 p.m. Friday, February 5, 2021

Webinars: Conducted by Holt's Estimating Team, this session will review what you need to do and know to successfully bid a business. Learn from experts who understand what to include in your bid, what you need to consider to keep a profit margin and also how to understand the terms and conditions of your bid response. They start from the inside to get ready to bid and understand the art and science of bid preparation.

Evaluating Your Business for New Business: A Coaching Session
1:00 p.m. - 1:30 p.m. Friday, February 12, 2021

Webinars: How do you build your business as a building contractor? How do you stand out from your competitors? How do you present your competitive edge and what a company should look for? This session will take you through the elements of your proposal and simple to implement marketing programs. This session includes forms and suggested benefits to support your company better.

What is a Project Labor Agreement, and How Do I Sign On?
1:00 p.m. - 1:30 p.m. Friday, February 19, 2021

Webinars: This session will introduce you to Project Labor Agreements and review key provisions of the PLA for Terminal 8. This session will also review the contract option and what that means for the business. The session will also address building your project labor team and how to manage job site disputes if they occur.

Money! How do I find it, make it and manage it?
1:00 p.m. - 1:30 p.m. Friday, February 26, 2021

Webinars: Access to capital is the key to success for any construction contractor. This session will review some modification financing resources as well as share best practices for getting paid on time.

Do I want to work in construction?
1:30 p.m. - 2:30 p.m. Friday, February 5, 2021

Webinars: Construction jobs from apprentice to project superintendents create a sustainable path to financial independence and security. Learn more about the opportunities that a career in construction, specifically the building trades, can provide. It is a sure path to the middle class and a excellent career opportunity in a very challenging economy.

Find Opportunities in the Building Trades: Meet Non-Traditional Employment for Women
1:30 p.m. - 2:30 p.m. Friday, February 26, 2021

Webinars: This session will introduce women to opportunities in the Building Trades. Meet the experts from Holt's Traditional Employment for Women (TEW). The country's leading program for women in the building trades. Learn in a conversation from some TEW professionals already on the job site.

MARCH

Pricing a Job Right: Takeoffs, Estimates and Other Tips
1:00 p.m. - 1:40 p.m. Friday, March 5, 2021

Webinars: This session will take you through a deeper dive of the factors to consider as you develop your bid. Experts will show you how to be strategic, learn from experts to build your takeoff and estimate correctly. Understanding a project may save you the bid, but if you don't have a profit, the project can impact your business.

Insurance: Understanding OCIPs and Other Insurance Requirements
1:00 p.m. - 1:30 p.m. Friday, March 12, 2021

Webinars: Insurance policies and the coverages they provide are often very confusing. This session, led by insurance industry experts, will help you understand the coverages included in the Owner Contracted Insurance Program (OCIP) provided by American Airlines. It will also review the additional insurance you will be required to have in order to bid on a project. This session will demystify your insurance policy for you.

How to Get Paid
1:00 p.m. - 1:40 p.m. Friday, March 19, 2021

Webinars: Getting paid is the key to operating your construction company. Often payments are delayed because paperwork and documentation is incomplete. This session will review the requirements but also explain how your relationship and communication with the owner or prime contractor can expedite payments to your company.

High Performance Contractors: Best Practices for Small Businesses
1:00 p.m. - 1:30 p.m. Friday, March 26, 2021

Webinars: How do you build your business better? Join this session and learn from successful subcontractors about how to operate your firm and perform successfully on the job. This session is a must for a construction contractor who wants to grow their company in the general and niche construction markets.

Navigating Pre-Apprenticeship Programs and the NYS DOL Website
1:30 p.m. - 2:30 p.m. Friday, March 5, 2021

Webinars: Pre-apprenticeship programs are one key way to enter the industry. But the NYS Department of Labor website also offers job opportunities. This session will review several pre-apprenticeship programs, as well as community construction ready programs available to you. Also learn how to navigate the NYS Department of Labor website to identify job opportunities.

Find Opportunities in the Building Trades: Helmets to Hardhats
1:30 p.m. - 2:30 p.m. Friday, March 26, 2021

Webinars: If you are former military, learn more about the special interest to Hardhats pre-apprentice program, join this session to learn more about the opportunities to get you ready to work in the construction industry.

CURRENT OPPORTUNITIES

**TAA Number: YR-8006-002 – Head House Expansion 30’
30’ Bump Out Exterior Closure and Interiors
(Release to bid January 2021)**

HVAC	\$500K-\$750K
Electrical (1 st Floor Scope)	\$1-1.5M
Painting	\$100-150K
All Finishes *	\$1.25-1.5M
Total	\$2.85 MM - \$3.9 MM

***All Finishes encompasses the following scopes of work; Millwork, Terrazzo, Flooring, Feature Wall, Ornamental Metal and Glass, Signage and Toilet Partitions**

Visit www.anewjfk.com or email jfkT8@holtcc.com for latest information.



CURRENT OPPORTUNITIES

**TAA Number: YR-8006-004 – 60' B Concourse Expansion
Exterior Enclosure and Interior Finishes
(Release January 2021)**

Carpentry	\$600-700K
HVAC	\$475-600K
Flooring	\$100-125K
Plumbing	\$100-120K
Painting	\$40-60K
Millwork	\$120-140K
Glass & Glazing	\$60-80K
Electrical	\$300-500K
Labor	\$150-250K
TOTAL	\$1.34 MM – \$1.87 MM

Visit www.anewjfk.com or email jfkT8@holtcc.com for latest information.

CURRENT OPPORTUNITIES

**TAA Number: YR-8006-006 – C-Concourse
Gate 31&32 Up-Gauge
(Anticipated release date Q1-Q2 2021)**

Site/Civil	\$750K-1M
Piles	\$250-500K
Concrete	\$500-750K
Steel	\$750K-1M
Masonry	\$250-500K
Roofing	\$250-500K
Wall Panels	\$2-2.5M
Interiors*	\$2-2.5M
Total	\$6.75 MM - \$9.25 MM

**Interiors encompasses all of the following scopes of work; carpentry, plumbing, sprinkler, HVAC, electrical, painting and wall coverings, flooring, millwork, ornamental metals and glass, signage, toilet partitions.*

Visit www.anewjfk.com or email jfkT8@holtcc.com for latest information.

ONE JFK VISION – RESTROOMS & SIGNAGE

- Restroom Finish Refresh:
 - (13) public facing restrooms at Terminal 8 to be refreshed
 - (2) new restrooms as part of the ongoing Terminal Expansion project utilizing new finishes
- New “locally themed” signage in select locations throughout Terminal 8
- Design and logo replacement on Terminal 8 East Façade
- Received 12 Qualifications submissions
 - Short-listed 4 firms for proposals
 - Pending award to RCGA
 - Future restroom project opportunities after design is complete beginning Q2 2021

RCGA

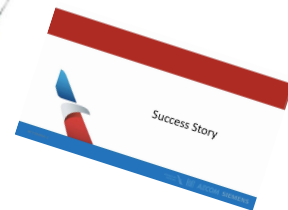


Crystal McKenzie, Inc.

Clifford Dias, PE, PC
Consulting Engineers

GEDEON GRC CONSULTING
ENGINEERS • PLANNERS • CONSTRUCTION MANAGERS

KHEOPS
Architecture, Engineering
& Survey, DPC



Questions and Answers

Question

What are some of the items needed for the bid package?

Answer

Posted on www.ANewJFK.com under American Airlines Tab

Reminder: Those interested in bidding for any opportunity should participate in the Virtual Webinars being held monthly by the PA & its partners..

Question

Regarding Terminal 6 what are the next key meetings or deadlines the Community should be aware of?

Answer

JFK Millennium Partners is the team working on Terminal 6 and there are no current updates due the COVID-19 Impacts. They are available on 1st & 3rd Wednesdays of every month during their office hours to engage with the community.

Question

Can you further clarify the populations represented by Tier 4 Workforce participants identified as PANYNJ District?

Answer

Since the inception of this redevelopment the following designation

Tier 1 - 3 dozen zip codes represented in the area of the Redevelopment

Tier 2 - Borough of Queens

Tier 3 - Remaining Boroughs of NYC

Tier 4 - Larger PA District - including parts of NY & NJ

Tier 5 - Other States

Question

Some of the businesses I work with began working with the Community Office in downtown Jamaica pre Covid-19 and were looking to get MWBE certification. They have reported to me that they are still not through with the process and have received some delays. How can I best address these issues?

Answer

Please email information to QBailey@PANYNJ.gov and he will track and provide the status of those businesses.

Question

Did I miss the Terminal 6 presentation

Answer

Terminal 6 didn't have any updates to share. The project is on pause right now due to COVID-19 impacts as shared earlier..

Question

Will tonight's presentation be shared?

Answer

Notes from this meeting will be shared on www.ANewJFK.com

Question

What specifically is being done to increase the numbers in Tier 1 & Tier 2

Answer

T8 has just put these measures in place and is actively working on getting more women into the workplace. Additionally, PLA will hopefully increase participation for the targeted areas.

Question

Pathways College Preparatory High School wanted to find out where are we with Community Partnerships in discussion pre COVID-19?

Answer

The Redevelopment Office will reach to schedule follow up conversations.

Question

Mr. Heiglyger asked to obtain a copy of the PLA?

Answer

We can provide a guideline / outline of the salient points and invite you to the January 21st event on the PLA.

Question

How things are looking to reaffirm the commitment to the Second Chance Initiative?

Answer

The PA remains 110% committed to the Second Chance Employment Initiative. Opportunities will be coming online soon with our Community partners with the 1st & 2nd Quarter of 2021

Closing Remarks

Dr. Grant closed the meeting with a note of thanks for all the work everyone is contributing to this legacy project for our community and best wishes for the Holiday Season. She also shared this quote by William A. Ward as a final thought:

“Gratitude can transform common days in thanksgivings, turn routine days into joy and change ordinary opportunities into blessings!”