



A New JFK:

JFK Redevelopment Community Advisory Council Meeting

July 8, 2019 6:30pm-8:30pm

Linden Seventh Day Adventist Church, Laurelton, NY

JFK Redevelopment – General Advisory Council Co-Chairs
Congressman Gregory Meeks
Queens Borough President Melinda Katz

INTRODUCTORY REMARKS

Dr. Grant welcomed the audience, introduced key stakeholders and gave an overview of the agenda as well as announcements about the Business Census Survey and Q&A process.

“As I was preparing for tonight, I came across a quote from Coretta Scott King that says: “The greatness of a community is most accurately measured by the compassionate actions of its members.” And that’s what we’re focused on tonight, this wonderful opportunity for redevelopment and to make sure that our community is better for the work that is done here in Southeast Queens, Southwest Queens, the Rockaways, and Western Nassau.”

Borough President Katz & Congressman Meeks lauded the community and its continued engagement on the project.

“And months ago when this started with the redevelopment of JFK, the Congressman and I and the elected officials that represent the area made it very crystal clear that this was a project that had to be done with the community. That the jobs in the community needed to be available, jobs at the airport needed...But I would say the Port Authority really has stuck to a lot of promises and I'm very happy that the community shows up every meeting to show them how important it is to us. And so we want to thank the community who is involved, all the committees that have been working. We do want to thank everyone who is working on the employment opportunities, the second-chance employment opportunities, the local hiring to apprenticeship program to union jobs.” BP Katz

“It is great to see all of you here, it's great to know that you're focused and committed and concerned about what's taking place in our community. This is what it's really all about, about having the community participation that's necessary. As we have our presenters here, we want to make sure that they see not only the individuals that are on the board but the community in general. Those that are here, not only the advisory committee, but everyone is here because this is a significant and important project. And there's a lot of work to be done. I want to say thank you to all the co-chairs of the committees because you're sacrificing your time and you're meeting on a regular basis, and we want to make sure we hear back from you what's important because you're listening to those voices. I say to our presenters, you've got a responsibility to make sure you're honest with our communities and that we have dialogue with you.” Congressman Meeks

PANYNJ UPDATES

SELVENA BROOKS-POWERS & NANTASHA WILLIAMS
Managers External Affairs and Community Outreach, JFK
Redevelopment Program



Program Update

Program Timeline	
Key Dates	Milestones
Fall 2019	<ul style="list-style-type: none"> The New Terminal One (T1) & JetBlue (T6) Leases Finalized AA Groundbreaking
2020	<ul style="list-style-type: none"> Environmental Approval The New Terminal One & JetBlue Groundbreaking
2022	AA Completion
2023	New Gates at T1 and T6
2025	Completion

3

The Port Authority is looking closely at all aspects of construction logistics to make sure there are no adverse impacts to the airport during normal hours of operation.

The Port Authority is also working closely with the FAA with regard to the NEPA process and anticipates a full update in the fall.

PROGRAM UPDATE



"At the center of the airport, the Port Authority will seek **proposals to develop the new Kennedy Central hub, issuing a Request for Information in the coming months to determine the most effective and functional way to leverage this blank canvas** in a fashion that will complement and add value to airport experience."

4

Within the next week, the JFK Redevelopment team will release a Request For Information for the development of Kennedy Central, a 16-acre site which would sit atop the planned ground transportation center. The Port Authority is seeking ideas for mixed commercial development and vibrant large-scale public space that unifies the airport while providing amenities for passengers and employees.

The first step we will be accepting proposals through August and there will be a formal request for qualifications and/or a Request For Proposals will follow.

This is really important to the local community because:

- This means potential partnerships with the community-based designers and local artists.
- This means opportunities to incorporate local retail and food service businesses on a rotating or permanent basis (something that we heard in numerous meetings).
- This is also an opportunity to advance community goals in four of the main pertinent areas: business, environmental stewardship, workforce, and education.
- This is going to be subjected to our 30 percent MWBE goal.

COMMUNITY OUTREACH EFFORTS



A NEW JFK TAKING OFF NOW

Community Outreach Efforts

- TWA Hotel/RDRC Job Fair
- TWA Hiring Event at JFK Redevelopment Community Information Center
- Open House at JFK Redevelopment Community Information Center
- Fred Wilson Democratic Club Meeting
- Senator Sander's Job Fair
- Career Day at August Martin H.S., H.S. for Law Enforcement and Public Safety, Springfield Garden Campus
- Spring Job Fest @ Thomas White Jr. Foundation, South Jamaica Houses, Opportunities for a Better Tomorrow, The Greater Allen AME Cathedral of NY, Urban Upbound
- MWBE Certification Workshops (Nassau County and Southeast Queens)

The graphic includes a circular inset photograph of two women sitting at a table covered with a blue cloth that has the 'A NEW JFK TAKING OFF NOW' logo on it. They are smiling and appear to be at a community outreach event.



Terminal Developer Office Hours

Organization	Days	Times
The New Terminal One Group	2 nd and 4 th Thursdays	1-5PM
JetBlue & JFK Millennium Partners	1 st and 3 rd Wednesday	3-5PM
American Airlines	1 st Fridays	11-1PM
Queens Air Services Development Office	Every Thursday	11-5PM

COMMUNITY INPUT SUBMISSION

The JFK Redevelopment Outreach Team is excited to announce our Community Input Submission Form is now live on www.ANEWJFK.com. If you have an idea that has a direct connection to the JFK Redevelopment and any of its Advisory Council Committees-Business Development, Education, Career/Workforce Development and Environmental Stewardship. We encourage you to please submit your idea via the online form.

For more information, please visit www.ANewJFK.com and if you have any questions, please email us at jfkdevelopment@panynj.gov.



JFK Redevelopment Interns

From left to right:



Nathaniel Shepherd-Tyson – JFK Redevelopment -Engineering

Natasha Turner – JFK Redevelopment-Community Outreach and External Affairs

Ferdin Mustafa – JFK Redevelopment – Engineering

Charles Everett – Interim JFK General Manager & Deputy Director of Aviation

Dabiana Begum - JFK Redevelopment – Engineering

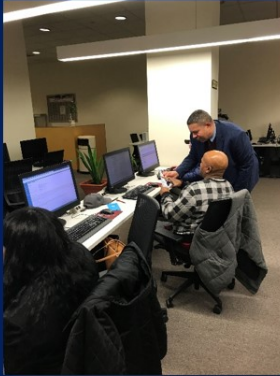
Briana Lalman – Diversity & Inclusion

Raman Singh – Construction Engineering³²



MWBE Capacity Building Efforts

Since March 2019, the JFK Redevelopment Program has held the following events:



- 4 Professional Services Roundtable events across such industries as Security and Construction Site Mobilization
- Bi-Monthly M/W/S/D/BE Certification Workshops
 - 14 MWBE Certifications in process, 22 certified to-date

Upcoming Events include:

- Roundtable Series, Cont. (July – September)
- M/W/S/D/BE Certification Workshops: 3 in July, 2 in August
 - For more details on events, please visit www.ANewJFK.com
- ACDBE Information Session – Summer 2019 (Date TBA)

Note: For the JFK Redevelopment Program, PANYNJ and NYS ESD Certifications will be accepted.



Local Business Census Status

52,251 local businesses have been identified in the local, targeted zip codes.

- **Business Sources:**
 - Mason Tillman's proprietary database
 - NYC business licenses and applications
 - NYC agencies' MWBE certification lists
 - NYS corporate registrations and occupation licenses
 - Trade associations, chambers of commerce, advocacy groups, and technical assistance centers directories
- Business data housed in Salesforce, a cloud-based platform secured access from web browser
 - General public permission
 - Read-only access to business name, address, and primary industry



Local Business Census Status

- **Electronic survey** to 2,341 businesses with email addresses
 - Business received an email with a unique URL that was prefilled with the contact and demographic information already verified by Mason Tillman.
- **Post card** mailed to 47,147 businesses
 - Inviting them to complete the survey online at jfkbusinesscensus.com
 - Businesses were primarily gathered from government sources, i.e. state corporations and city business licenses.
- **Telephone calls** to 5,071 businesses
 - Businesses provided critical information by phone. Surveyors asked for their email address to send a custom URL to answer all remaining questions.



Outreach Plan to Compile Business Census Data

- Survey distributed to the 52,251 businesses by email, telephone, and postal mail
 - Business status is verified
 - Willingness to participate on JFK Redevelopment contracts is confirmed
 - Business capacity to perform construction, professional services, commodities, and non-professional services contracts is assessed
- Social media, print media, and billboard marketing strategy
 - Paid digital advertisements posted on Twitter, Instagram and Facebook
 - News stories published in community newsletters
 - Billboard and mini boards placements
 - Fact sheet and notices distributed through the faith community
 - Social media toolkit to partner with elected officials and advocacy groups

16



Local Business Census Local Partners



Danielle Douglas
Inspire Enterprise, Inc.

- **Community Outreach Subconsultant**
- **Certified, Local PANYNJ MWBE**
- **Southeast Queens Resident**
- **Experienced Capacity Builder**



- **Full Service Printing & Direct Mailing Company**
- **Member of JFK Chamber of Commerce**
- **Certified, Local PANYNJ MWBE**



Community Initiatives Update

Business Development Committee

- Identifying new and existing local resources to assist in preparing local and MWBE businesses to compete for contracting opportunities relating to the JFK Redevelopment
- Working to create a mechanism to connect local and MWBE firms with JFK Redevelopment contracting opportunities and provide a space to share valuable resources to further assist them in performance and contracting opportunities
- Determine ways to support businesses looking to be a concessionaire

Next committee meeting will be held on July 30th at 4pm location TBD



Community Initiatives Update

Environmental Stewardship Committee

- To reduce consumption of fossil fuels and enhance local participation in the clean energy economy through initiatives such as:
 - Community Solar Project
 - Require developers to meet at minimum LEED Silver certification for buildings
- Protect the quality of water in Jamaica Bay during construction and operating phases
- Reduce air emissions during both construction and operating phases at the airport
- Determine ways to support natural habitats surrounding the airport and partner with local organizations focused on environmental science

Next committee meeting will be held on July 25TH at the JFKR Outreach Office

21

Since our last community advisory council meeting, each of the committees have met and are working through continued discussion on short-term and long-term community initiatives in collaboration with the Port Authority and the terminal developers. Committees have also worked on drafting mission and vision statements that are still in development. The goal is to get as much of your feedback to the committees so that all the ideas, the concerns can be vetted in the committee and shared with our terminal developers and the Port Authority.



Community Initiatives Update

Business Development Committee

- Identifying new and existing local resources to assist in preparing local and MWBE businesses to compete for contracting opportunities relating to the JFK Redevelopment
- Working to create a mechanism to connect local and MWBE firms with JFK Redevelopment contracting opportunities and provide a space to share valuable resources to further assist them in performance and contracting opportunities
- Determine ways to support businesses looking to be a concessionaire

Next committee meeting will be held on July 30th at 4pm location TBD

20



Community Initiatives Update

Environmental Stewardship Committee

- To reduce consumption of fossil fuels and enhance local participation in the clean energy economy through initiatives such as:
 - Community Solar Project
 - Require developers to meet at minimum LEED Silver certification for buildings
- Protect the quality of water in Jamaica Bay during construction and operating phases
- Reduce air emissions during both construction and operating phases at the airport
- Determine ways to support natural habitats surrounding the airport and partner with local organizations focused on environmental science

Next committee meeting will be held on July 25TH at the JFKR Outreach Office

21



Community Initiatives Update

Career/Workforce Development Committee

- Maximize access to employment opportunities on the JFK redevelopment for residents though leveraging existing organizations such as the Council for Airport Opportunity
- Create a true pathway to union careers for local-residents and determine local workforce goals
- Provide employment opportunities for individuals that have been involved with the justice system

Next committee meeting will be held on July 23rd at 7pm at the JFKR office

22



Community Initiatives Update

Education Committee

- Expose K-12 students to S.T.E.A.M. concepts and encourage career paths in aviation ongoing programming, providing aerospace related enrichment activities and career exploration
- Continue to support August Martin High School's Aviation Program
- Initiate a College and High School internship program for students living in targeted communities

Next committee meeting will be held on July 25th at 4:30pm at York College

23

**External Affairs & Community Outreach Managers:
Selvena N. Brooks-Powers & Nantasha Williams**
JFK Redevelopment Community Information Center is located at
144-33 & 35 Jamaica Avenue, Jamaica, NY.

Office Hours:

Mon, Tues, Wed, Fri – 9am -5pm

Thurs 11am-7pm

Terminal Developers Host Regular Office Hours

Office Contact:

(718)-244-3834

JFKRedevelopment@panynj.gov

www.ANewJFK.com

HIGHLIGHTS FROM: TOGA TEAM, TERMINAL ONE GROUP ASSOCIATION



Presentation Overview



- August Martin Flight Training Scholarships
- MWBE and Local Opportunities Engagement Events
- Community Outreach and MWBE Activity Recap
- JFK Airport Academy
- Near-Term Opportunities
- Future Opportunities

August Martin Flight Training Scholarships



- On June 11, 2019, The New Terminal One Team presented 29 local students with flight training scholarships
- The students are part of the Aviation Scholars program at August Martin High School
- Flight training for the students will take place over the summer at the Academy for Aviation in Farmingdale, NY
- Students will earn a special certification following completion of their training which can be used as they pursue future careers in aviation

MarketWatch

The New Terminal One Team Helps Launch Queens High School Students Into Aviation Careers As The JFK Redevelopment Program Community Initiative Gains Altitude

By
Published: June 27, 2019 9:48 a.m. ET

CAG Holdings, The Carlyle Group, JLC Infrastructure, and Ullico Provide Flight-Training Scholarships For August Martin High School Aviation Academy Students

JAMAICA, N.Y., June 27, 2019 (PRNewswire) — The New Terminal One Team took to the skies today announcing an innovative community initiative to provide flight-training scholarships to rising students in the August Martin High School Aviation Academy as the air travel industry predicts a global shortage of pilots in the future, officials said.

The announcement comes as The New Terminal One Team ramps up its local presence as part of the JFK Redevelopment Program, a \$13 billion infrastructure project underway with the first phase scheduled for completion in 2025.

The innovative student flight training initiative comes as industry estimates and other news reporting indicate to have more flight line have industry experts predicting a need to 50 thousands of pilot vacancies during the next several decades. Under the grant initiative, 20 students will receive flight training at the Academy of Aviation in Farmingdale, N.Y. officials said.

The New Terminal One Team, collectively known as the "Consortium," comprises operating and financial partners led by CAG Holdings and The Carlyle Group, JLC Infrastructure, and Ullico. The Consortium was selected by the Port Authority of New York and New Jersey to undertake the redevelopment and expansion of JFK Terminal One. The plan was first unveiled in Governor Andrew Cuomo's Vision Plan for the John F. Kennedy International Airport (JFK) in 2017.

Andi Ribby, President, and CEO of CAG Holdings, said, "The New Terminal One Team is thrilled to award flight training scholarships to these 20 exceptional August Martin students. We are proud to support the development of the next generation of aviation professionals by providing young people with access to Science, Technology, Engineering, and Math (STEM) experiences."

Rory Farrell, Principal at August Martin High School, said, "One of the most important components of the Aviation Academy is that students can accrue actual flight hours in an aircraft. Thanks to The New Terminal One Team providing funds for our students to receive the first step of their flight time as a result of our partnership with the JFK Redevelopment Program we have opened the door to internships, technical training, and a direct pathway to a myriad of career options with airlines. We look forward to continuing to find ways to create new opportunities for our students as we work to shape the aviation leaders of tomorrow."

The Aviation Academy at August Martin High School helps prepare students for careers in the air travel industry. Students receive training on in-flight simulators at the school. They also receive observation hours, flight hours, and classroom time with flight instructors on-site.

Contact us at info@onejfk.com

MWBE and Local Opportunities Engagement Events



Architecture/Engineering Contractor Information Session May 31 at The Harvest Room, Greater Jamaica Development Corporation

- 70 local and certified firms attended
- Design team representatives:
 - PGAL (Architectural Design)
 - Syska Hennessey (Security, Mechanical, Electrical, Plumbing)
 - Walter P. Moore (Structural Engineering)
 - Atkins (Civil Engineering)



MWBE Contractor Information Session: Demolition April 24 at the JFK Redevelopment Community Information Center

- Overview of New Terminal One project demolition opportunities
- 9 local and certified firms attended

Contact us at info@onejfk.com

Community Outreach and MWBE Activity Recap



Aviation Career Days
The New Terminal One Team participated in JFK Redevelopment Aviation Career Days at three JFK area high schools:

- August Martin High School
- High School for Law Enforcement and Public Safety
- Springfield Gardens Campus

Recent Events

- Regional Alliance Contractors Clearinghouse (4/4)
- JFK Redevelopment Open House (4/11)
- JFK Rotary Club Run (4/14)
- Rockaway Redevelopment and Revitalization Corporation Gala (5/15)
- Queens Chamber of Commerce Business Expo (5/16)
- Senator Sanders Career Expo (5/17)
- National Association of Minority Contractors Meet & Greet (5/22)
- Council for Airport Opportunity Employment Fair (5/23)
- Aviation Career Days (5/21, 5/22, 5/30)
- Queens Air Services Development Office Networking Event (6/5)
- Carver Bank Business Networking Event (6/19)

Upcoming Events

- Community Center Office Hours (Second Tuesday & Fourth Thursday monthly)
- Site Mobilization Information Sessions (7/25, 8/22)
- Construction Information Session (9/18)

Upcoming Event details can be found online at: www.onejfk.com

JFK Airport Academy: Progress to Date

- A training facility to attract and train local members of the community for careers in aviation
- Ongoing discussions and diligence over the past few months to inform the development of the JFK Airport Academy:
 - Completed market scan of existing international, national and local aviation training programs to identify potential partners and ensure Academy offering is complementary
 - Introductory meetings with international aviation organizations on potential accreditation opportunities
 - Presented preliminary JFK Airport Academy concept to the Education Committee of the JFK Redevelopment Community Advisory Council on June 7
 - Developing initial course offerings and facility sizing assessment



Continued development of JFK Airport Academy concept with input from the local community, local educational institutions, the Port Authority and other JFK stakeholders

Contact us at info@onejfk.com

THE NEW TERMINAL ONE
JFK INTERNATIONAL AIRPORT

30

Confidential

Overview of Near-Term Opportunities (1/2)

Professional Services

Category	Description	Timing	Next Steps
Legal	Real Estate	Fall 2019	Accepting interest; Interviewing candidates from PA Professional Services Roundtable
Legal	Bond Counsel; Lender Counsel	Fall 2019	Accepting interest; Interviewing candidates from PA Professional Services Roundtable
Legal	Project Management Office	Winter 2019	Details to be provided in Summer 2019
Accounting	Tax Consultant	Summer 2019	Accepting interest; Interviewing candidates from PA Professional Services Roundtable
Accounting	Project Management Office	Fall 2019	Details to be provided in Summer 2019
Compliance	Vendor Reviews, Background Checks	Immediate	Accepting interest
Security	Cybersecurity Risk Consultant	Immediate	Accepting interest

Contact us at info@onejfk.com

THE NEW TERMINAL ONE
JFK INTERNATIONAL AIRPORT

31

Confidential

Overview of Near-Term Opportunities (2/2)

Design and Construction Related

Category	Description	Timing	Next Steps
Design Development	Green Garage Demolition	Summer 2019	Accepting interest
Design Development	Roadways/Terminal/Airside	Summer 2019/ Winter 2019	Accepting interest
Construction	Site Mobilization	Summer 2019/ Fall 2019	Accepting interest
Construction	Piles, Concrete, Steel, Curtain Wall, Vertical Transportation, Baggage Handling	Summer 2019/ Fall 2019	Accepting interest
Construction	Green Garage Demolition	Fall 2019/ Winter 2019	Identifying local MWBE architects and demolition firms
Support Services	Printing, Office Supplies, Catering	Summer 2019/ Fall 2019	Accepting interest

Contact us at info@onejfk.com

THE NEW TERMINAL ONE
JFK INTERNATIONAL AIRPORT

32

Overview of Future Opportunities

Project Timeline and Future Opportunities

Opportunities During Construction (2020 – 2025)	Opportunities During Operations (East Pier 2023, Full Terminal 2025+)
<ul style="list-style-type: none"> IT/Audio/Security/AV Interior Design Mechanical Engineering Building Trades Civil/Site Trades Catering (During Construction) Concessionaire Solicitation Janitorial Services Transportation Operators Art Curation Sustainability Consultants Office Supplies Provider Printing and Copying Services 	<ul style="list-style-type: none"> Airport Operations (Landside and Airside) Concessions Operators Customer Service Representatives Retail Jobs Legal Services Accounting Services Maintenance Professionals Janitorial Services Communications and PR Specialists Marketing Services

Contact us at info@onejfk.com

THE NEW TERMINAL ONE
JFK INTERNATIONAL AIRPORT 33

HIGHLIGHTS FROM: JET BLUE

JFK JetBlue Terminal 6 Team

Developers: jetBlue | JFK Millennium Partners | VANTAGE AIRPORT GROUP RXR

Owner's Rep: PMG Paslay Management Group

MWBE Consultant: J KRISTENSEN ASSOCIATES, LLC.

General Contractor: Design-Build Firm TBD

Questions? Interest? Want to join our mailing list? Reach us at info@jfk6.com or visit the JFK Redevelopment Office, 1st & 3rd Wednesday of every month, 3:00-5:00pm.

Early MWBE & Community Engagement

Early MWBE Engagement

April	May	June	July	August	Fall →
MWBE Meet & Greet with potential Design-Build firms	Design-Build Request for Proposals Open D-B Contractor outreach to PA MWBE list	Short-listed DB Contractors Partner With MWBEs on RFP Response		Design-Build Interviews & Selection Second MWBE event MWBE Investor Announcement	Pre-Construction Opportunities with Design-Build Firm
Career Day & Resume Workshop with CAO @ JetBlue					
MWBE Round Table Participation & Office Hours at JFK Redevelopment Center					
25+ Community Engagement, Events & Advisory Committee Meetings					

Turner Construction Company
 375 Hudson Street, 6th Floor
 New York, NY 10014
 Kendall, Sara - skendall@tcco.com

Lendlease
 200 Park Avenue, 9th Floor
 New York, NY 10166
 Valdemira, Vincent -
 vincent.valdemira@lendlease.com

Hunt/Lane
 Hunt Construction Group
 100 Park Avenue, 5th Floor
 New York, NY 10017
 Sheets, Jerry - Jerry.sheets@aecom.com

The Lane Construction Corporation
 145 Huguenot Street, Suite 320
 New Rochelle, NY 10801
 D'Amico, Louis - LSDamico@laneconstruct.com

Questions? Interest? Want to join our mailing list?
 Reach us at info@jfk16.com.

April MWBE Meet & Greet



- Comprehensive project overview
- 8 prospective DB firms

- Outreach to 1,500 local MWBEs
- 250 MWBE participants

In The Community

Recent Events

- JFK Redevelopment Open House (April 11)
- MWBE Meet & Greet (April 16)
- Rockaways Tree Planting with JetBlue for Good (April 18)
- NYC SCA/DDC MWBE Procurement Fair (April 11)
- NYCHA MWBE Outreach Event (May 2)
- JetBlue Careers Day & Resume Review with CAO (May 21)
- South Queens Career Days (May 21, 22, 30)
- National Association of Minority Contractors Meet & Greet (May 22)
- Queens Air Services Development Office Networking Event (June 5)
- Carver Bank Networking Event (June 19)
- MWBE Roundtable – Site Preparation Services (June 26)
- And many more!



Jean Kristensen Associates

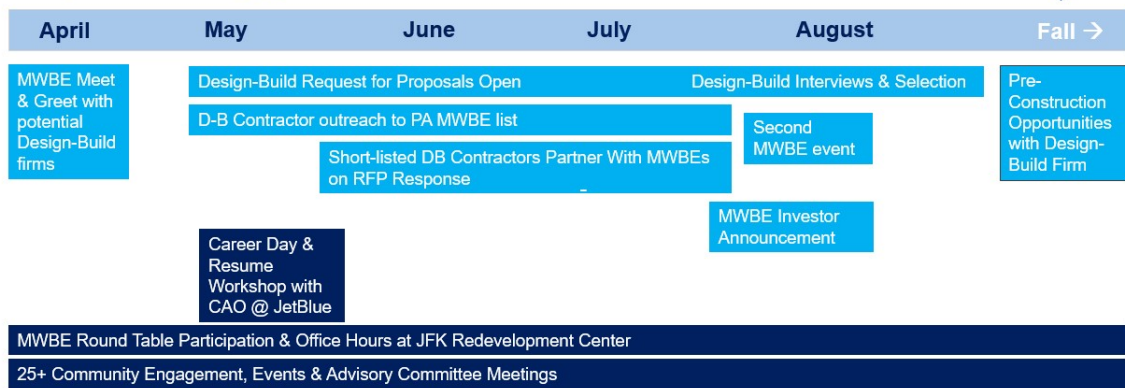
- Certified minority and woman owned management consulting firm headquartered in New York City
- Specialize in MWBE capacity building, workforce development & training and compliance
- Jodia Nesbeth Vanel shall serve as project manager for JetBlue, overseeing our community engagement and outreach program
- Partner with Southeast Queens Community to share transparent and updated information about the JFK redevelopment phases and opportunities
- Attract, Identify and retain local and NYC MWBE's for the JFK Redevelopment project
- Exploring workforce development and training programs, MWBE match-making & tier two opportunities for smaller MWBE firms, and MWBE access to one-on-one technical assistance, coaching, training and more



Questions? Interest? Want to join our mailing list?
Reach us at info@jfk6.com.

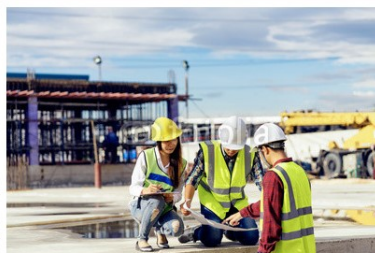
Early MWBE & Community Engagement

Early MWBE Engagement



Questions? Interest? Want to join our mailing list?
Reach us at info@jfk6.com.

Near-Term Opportunities Through Design-Build Contractor in 2019



- Architectural services
- Engineering
- Geotechnical soil sampling/testing
- Surveying
- Safety management
- Cost estimating
- Schedule management
- Document controls
- Technology/network/telecommunications for field operations
- Legal
- Payment Management/Controls
- Inspections
- Quality Control/Materials Testing
- Project, Construction, and/or Logistics Management

Questions? Interest? Want to join our mailing list?

Construction Opportunities | 2020



- Catering
- Interior design
- Janitorial services
- Transportation operators
- Sustainability consultants
- Printing and copying services
- Landscaping
- Document control
- Excavation
- Crane rental
- Demolition services
- Concrete
- Structural steel
- Document controls
- Building trades
- Civil/Site trades
- IT/Audio/Security/AV
- Mechanical engineering
- Signage

3,000 New Operational Jobs Upon Opening With Emphasis on Local Hiring



- Pilots
- Inflight Crew
- Airports Crew
- Maintenance Crew
- Hospitality staff



- Logistics
- Retail staff
- Concessions staff
- Support Center
- Terminal management



- Security
- TSA / CBP
- Customer support
- Facilities
- And more!

Questions? Interest? Want to join our mailing list?
Reach us at info@jfk6.com.

Coming Up in Queens!

jetBlue

JetBlue ACE Camps in partnership with the Organization of Black Aerospace Professionals (OBAP): July 8-12

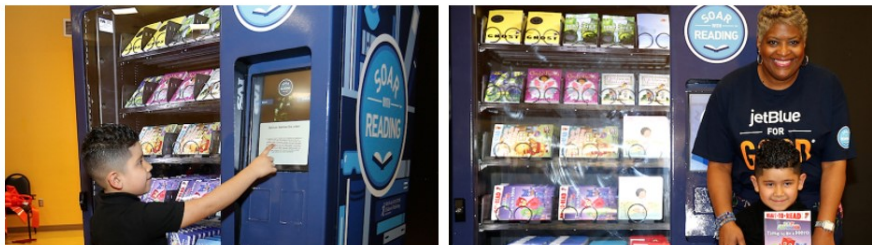
- OBAP's Aerospace Career Education (ACE) Academy provides middle and high school youth with exposure to opportunities in aerospace and aviation through week-long summer camps.
- Endorsed by the Federal Aviation Administration (FAA), OBAP has served a leading role in establishing ACE Academies nationwide to introduce, educate and guide diverse students towards careers in aviation.
- OBAP's immersive ACE Academies provide exposure to the history of aviation, fundamentals of aerodynamics, air traffic control procedures, aerospace technologies and introductions to aviation careers.
- Participation from students from Southeast Queens



Coming up in Queens!

jetBlue

Thousands of New, Free Books This Summer through Soar with Reading!



- July 12-Sept 6
- Queens Public Library, Central Branch
89-11 Merrick Blvd, Jamaica, NY 11432
- Ocean Bay Community Cornerstone57
10 Beach Channel Drive, Arverne, NY
11692
- A book machine in each borough with two locations in Queens!
- Award-winning literacy initiative tackles the issue of “book desert,” areas with limited access to age-appropriate books.
- The vending machines will be restocked every two weeks with new titles.
- Children and families are welcome to visit the book vending machines as often as they would like and can take as many books as they’d like.

Coming up in Queens!

jetBlue

13th Annual Jump & Ball Community Camp

The tournament provides free, fun-filled activities that promote physical health and wellness while teaching team building and leadership skills for over 400 people throughout Southeast Queens in August.



Partnering To Lift Up Communities and Our Industry

jetBlue

Who Should Apply?

- Qualified non-profit organizations and qualified educational organizations in the communities where JetBlue flies
- Organizations must provide or support education and/or certification in one or more of the following areas of study:
 - Aviation Technology
 - Aviation Engineering
 - Aviation Operations
 - Aviation Maintenance
 - Sustainable and Environmental Programs in Aviation
 - STEM Education (Science, Technology, Engineering and Math)
- These programs must serve one or more communities that are under-represented in Aviation including:
 - Veterans
 - Women
 - Economically disadvantaged communities
 - Under-represented ethnic groups, including but not limited to African-American, Latino or Asian-American communities

Submit a Proposal

- For consideration in a grant cycle, submit a letter of inquiry/proposal at jetbluefoundation.com/grants. All proposals will be reviewed and select organizations will be invited to submit an expanded application for final consideration by the Board of Directors.
- Proposals submitted after April 3, 2019 will be considered for the Fall 2019 grant cycle. Only projects that fit the defined program areas listed under “Who should apply?” are eligible for grant funding.


jetBlue
foundation



For Questions and to join our mailing list:

info@jfkT6.com

www.anewjfk.com/terminal6

HIGHLIGHTS FROM: TERMINAL 8 EXPANSION

AMERICAN AIRLINES TERMINAL 8



- Terminal 8 expansion allows for the **co-location of American Airlines and British Airways**
- **70,400** square feet of additional space including **33,000** square feet of public space
- **New amenities** including new check-in lounges, restrooms and upgraded concessions
- New **state-of-the-art** baggage handling system

BUILDING COMMUNITY PARTNERSHIPS



- JFK Redevelopment Community Advisory Council
- Greater Jamaica Development Corporation
- Jamaica Center for Arts & Learning
- Queens Public Library
- York College



ADVISORY COUNCIL FEEDBACK:

Speaker: NY State Senator Sanders

1. We need a community retreat, an opportunity for the community to meet with itself to decide what it needs.
 - Purpose: To know what the community is getting out of these things and what the MWBE is getting out of these things
 - The community needs space to strategize without developers being present.
 - There needs to plan to ensure that local people of color have a concessionary at JFK in the future.

Speaker: Barbara Brown (Chairperson /JFK Airport Committee of the Community Aviation Roundtable)

JFK Airport Committee took a year to brainstorm various projects for community benefits as a result of the JFK Redevelopment and approved 10 proposed projects which fall in the following 4 categories:

1. Noise Mitigation
 - Concerned about the human habitat and the natural habitat
 - Soundproofing mitigations including stakeholders living within the 55 to 64 decibel level.
 - Nighttime Restrictions on flights over residential communities
2. Research concerning pollution and health
 - Pollution studies for noise and air within 5-10 miles of JFK
 - Health effects of airport noise and air pollution in the Southeast Queens community
3. Education
 - Airport impacts on our schools
 - Impact on children's achievement levels
4. Economic Workforce Plan
 - Business Workforce Development
 - Union vs. Nonunion construction contracts
 - Business building enhancements / recommending a program is developed to enhance and support the current local businesses.

*Copies of the full report available from the committee.

Speaker: Gloria Boyce-Charles (Eastern Queens Alliance)

1. Reinforcing comments from Senator Sanders and Ms. Brown

2. Ask for Port Authority to really take a look into what they have shared and see all the issues raised as important components and effects of the airport, including ground transportation.

COMMUNITY QUESTIONS

1. How can we get an aviation program at Campus Magnet High School in Cambria Heights?
 - Nantasha Williams- Port Authority has been working with Superintendent Dr. Spitzer trying to devise ways to incorporate aviation emersion in different schools.
2. I know Vaughn College is not in the targeted zip codes but students who attend are residents from said zip codes. The students who have started aviation career paths, what can be done?
 - Nantasha-Port Authority has created a scholarship program for students looking to go to Vaughn College. There has also been discussion with York College about ways to partner with Vaughn College.
3. My son is a three-time published author and would like to know how he can partner with you on this reading initiative?
 - Ms. Gibbs - Please see me and we'll talk about incorporating your son in some way.
4. How does JetBlue source for the books for the programs?
 - Ms. Gibbs- JetBlue works with Susan Newman, an educator at NYU, and they took feedback from children. They get both English and Spanish books. They aim to reflect the community that the book vending machine is in that reflects diversity.
5. As a resident of Laurelton, I heard a lot of benefits for the businesses within the area but communities don't hear anything about the noise from the airplanes flying over our homes.
6. Please expand what is being done about the impacts of airplane noise? Airport noise effects are the most. What are you going to about the noise and emissions like benzene that are killing us?
 - Justin Bernbach - JFK Airport Community of the Community Aviation Roundtable was created by Governor Cuomo to address quality of life issues with the FAA and other stakeholders. The Part 150 Study for all the Airports will continue to address these important environmental issues. The JFK Redevelopment project was developed to accommodate the already planned for growth of JFK. Environmental benefits will continue to be a goal of the

committee and everyone is invited to the Environmental Stewardship Committee.

7. Is there a host community benefit program from the targeted zip codes affected by JFK Redevelopment? 1 % of a 13 Billion capital plan is 130 million, which is a reasonable target. If not, how much has been budgeted for the entire community outreach program as it currently exists?
 - Justin Bernbach- There's no number one number for community benefits to specify as there will be a number of investments in the community. This is about bringing economic opportunity to this community, which will ultimately exceed 1 %.
8. Is the plan or focus to hire local Queens businesses only? What are the opportunities for businesses outside of Queens and Nassau County?
 - Suzette Bather-Taylor- We are prioritizing local participation in targeted zip codes in the area of the redevelopment (Southeast Queens, Southwest Queens, The Rockaways & Western Nassau). If there is limited to no availability in those local target areas, then we are looking to enlarge that circle to include MWBE participation in those contiguous areas.
9. How do we track and identify monies that come into our community that stays in the community? And what monies are going to support local businesses? And a review of the concession requirements.
 - Justin Bernbach- We are working with 2 local firms, Crescent Consulting and RF Wilkins to assist us with outreach. They are going to be tracking a lot of things including the amount of money that comes in the community, the number of the contracts awarded to MWBE's, to local businesses, and the workforce goals that we have as a program.
 - Suzette Bather-Taylor- We want to be very thoughtful about concessions. Terminal Developers are committed as well, noting the leases are still in negotiations. The Port Authority is building out an educational forum around concession to educate the community. The goal is to provide the opportunity as well as the appropriate training.
10. Are there opportunities for other schools to work with the Terminal One Team?
 - Yes
11. How do we schedule time at the meet the Terminal Developers at the Community Outreach Office?
 - Office Hours are posted on ANewJFK.com

12. How are main contractors being enforced to ensure they're following up with the request that is being submitted by MWBE organizations?
 - Nantasha Williams- We have compliance consultants, RF Wilkins and Crescent Consulting. They will ensure that there's additional accountability outside of Suzette's office, the Office of Diversity and Inclusion, that we have external parties that will certainly enforce the guidelines put forth in our MWBE goals.
 - Suzette Bather -Taylor- The Office of Diversity and Inclusion has met with all the developers to discuss expectations around the way in which MWBE's and local participation should be achieved. They have brought on external consultants to demonstrate their commitment. My role is ensure opportunities don't fall through the cracks.
13. Jars of Delight and Adoba Health Center want to know how to work with / service the overall redevelopment.
 - Dr. Grant - Follow can take place at the Community Outreach Office or Committee Meetings.
14. Are these long term jobs? If not, how long?
 - Dr. Grant - Some are long-term job opportunities and some are short-term. As you meet with each Terminal Developer, you'll be able to find out additional information.
15. Comment: I challenge the Port Authority and Developers to stand in Brookville Park for just 5 minutes and hear the noise that comes over that part of the community.
16. Improvement the local access roads, Brookville, Farmers Boulevard, Guy R. Brewer, and the Belt exits. There's a question of whether or not there would be any impact on those areas in this redevelopment?
17. How do make sure that whatever money is put in the community stays in the community?
 - Dr. Grant - Each Committee is working on short term and long term legacy projects to ensure the community benefits.
 - Nantasha Williams – we have been meeting with companies like Jars of Delight and the Nourish Spot to share opportunities.
18. What target businesses are they looking for the RFI?
 - Justin Bernbach - The RFI is to program/design and come up with programming ideas for a very exciting space of 16 acres which is going to be built on top of the ground transportation center, and is going to be closest to Terminals 1 and 4, but will service the entire airport. It will be accessible to cars to the Air Train. Various Opportunities for Landscape Architects, Retail

Businesses, Food Businesses, etc. Opportunity to d something iconic in the airport.

19. Any consideration for co-working space and business services?
 - Mr. Bernbach - Absolutely! The idea is to have space similar to the WeWork setting. We are making a Shared Service Hub commitment to the community.

CLOSING REMARKS

Congressman Meeks – Thank you for all staying to the end to participate. I enjoyed hearing all your questions and concerns. The idea is to bring us all together to minimize the negativity and utilize the positive. I am encouraged to see you in the room. Making sure that Southeast Queens is a shining example of what is possible. Thanks to Governor Cuomo for organizing something that has never been done. There is a lot to be done and collectively as a community we will get it done.